

Control unit

Criteria:

Identification

Completeness

Mechanical damage

Corrosion



Control unit

Criteria:

Identification

Part number must be legible



Acceptable



Acceptable

Control unit

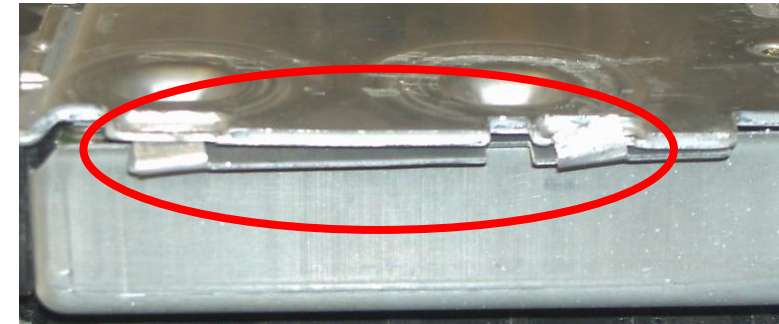
Criteria:

Completeness

Lack of screw or screw loose or housing bended open and/or previously opened devices and bended cover is not acceptable



Not acceptable



Not acceptable

Control unit

Criteria:

Mechanical damage

Damage on housing or plug strip damaged, deformed or burned is not acceptable



Not acceptable



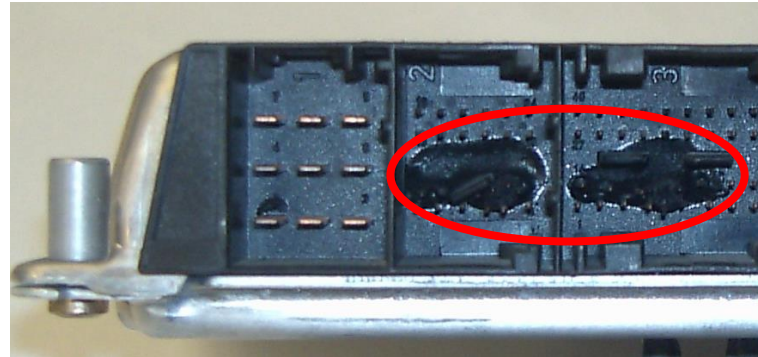
Not acceptable

Control unit

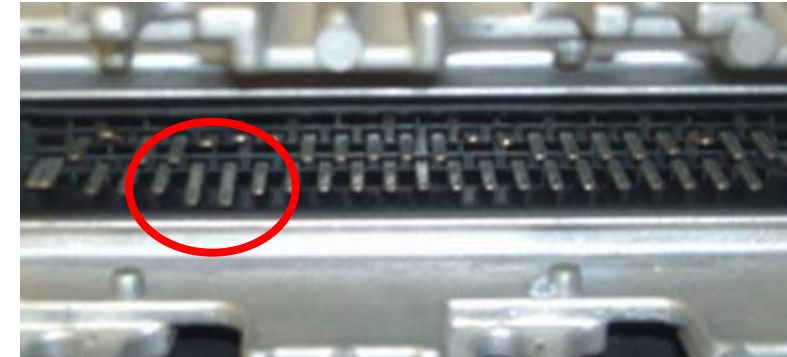
Criteria:

Mechanical damage

Damage on housing, connector or pins. Pins deformed or broken are not acceptable.



Not acceptable



Not acceptable

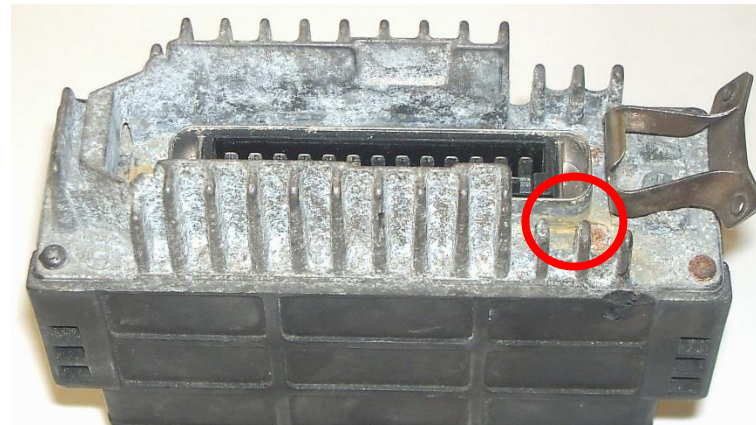
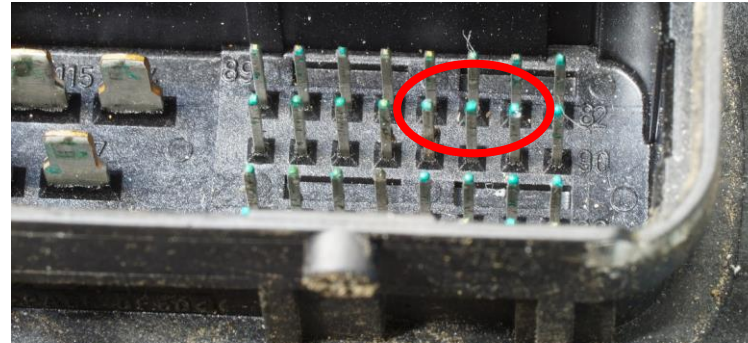
Control unit

Criteria:

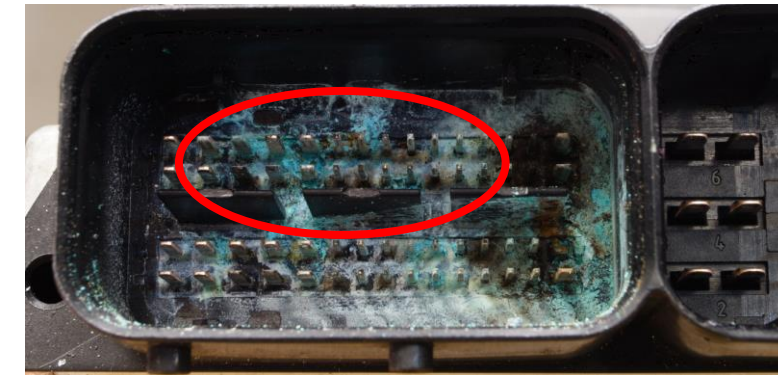
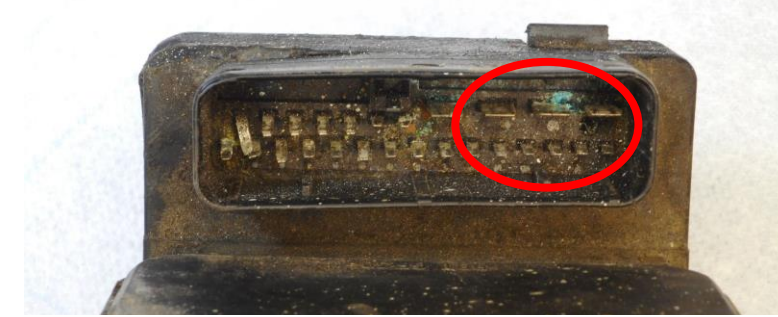
Corrosion

Corrosion due to liquids* on more than two pins or surfaces corrosion larger than 3 cm x 3 cm is not acceptable

*is not possible to repair electronics with „water damages“



Not acceptable



Not acceptable