

Electric steering

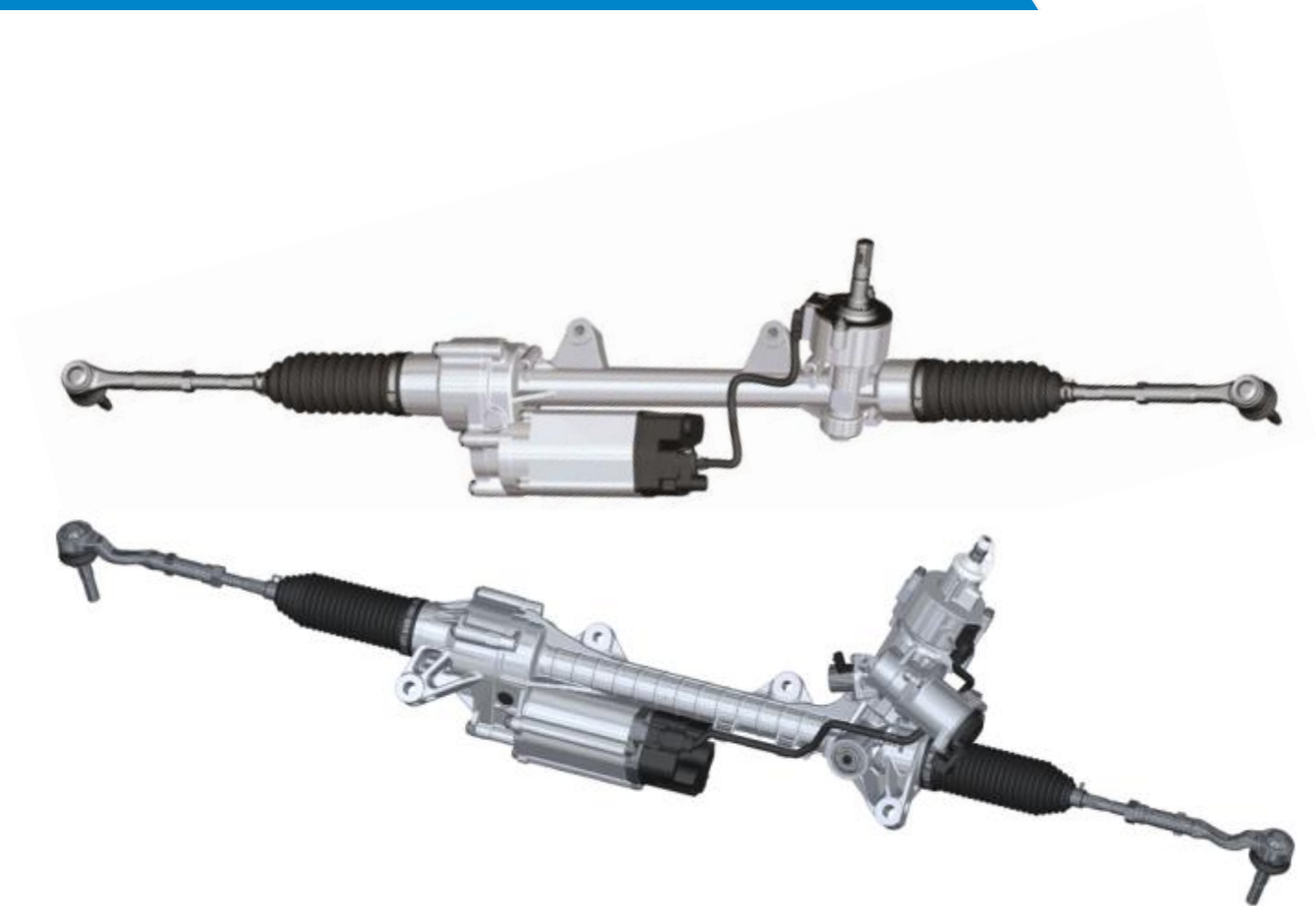
Criteria:

Identification

Completeness

Mechanical damage

Corrosion



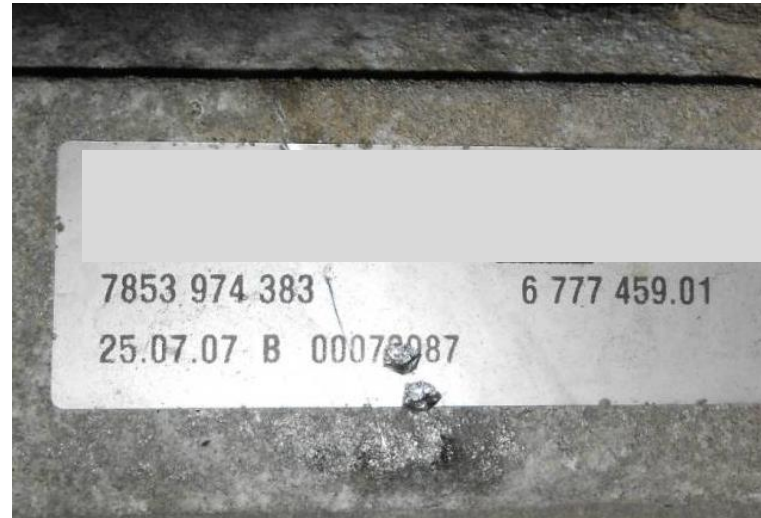
Electric steering

Criteria:

Identification

Order of identification:

- Factory number on the part or
- Bosch exchange number (e.g. starting with 78...) on the part or
- Bosch exchange number (e.g. starting with 78... or KS...) on the box



Acceptable

Electric steering

Criteria:

Completeness

Opened engine housing,
Housing lid missing is not
acceptable



Not acceptable

Electric steering

Criteria:

Mechanical damage

1. Accident damage
2. Damage on electronic plugs
3. External repair
4. Common mechanical damage

Electric steering

Criteria:

Mechanical damage

1. Accident damage:
Steering tie rod in same angle is acceptable



Acceptable

Electric steering

Criteria:

Mechanical damage

1. Accident damage:
Steering tie rod buckled,
deformed or not in same angle
is not acceptable



Not acceptable

Electric steering

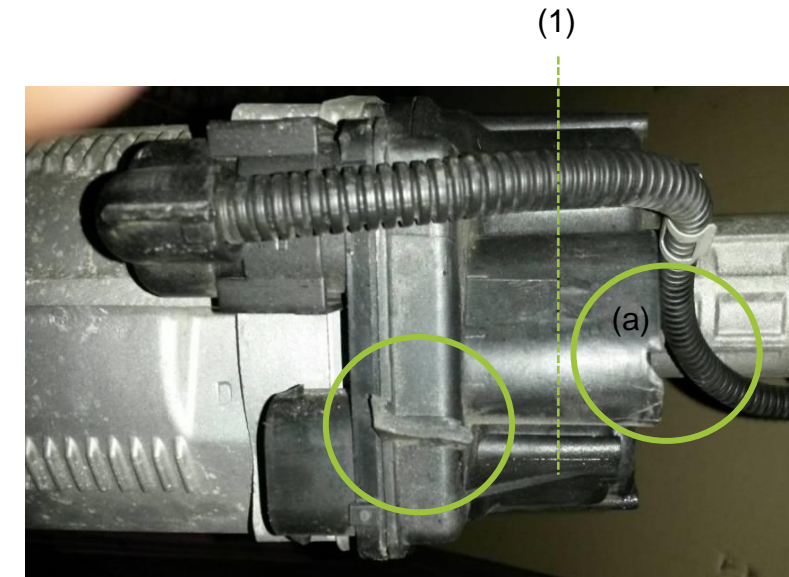
Criteria:

Mechanical damage

2. Damage on electrical plugs:
Plug broken (a) above rupture line
(1) and broken nose (b) is
acceptable



Acceptable



Acceptable

Electric steering

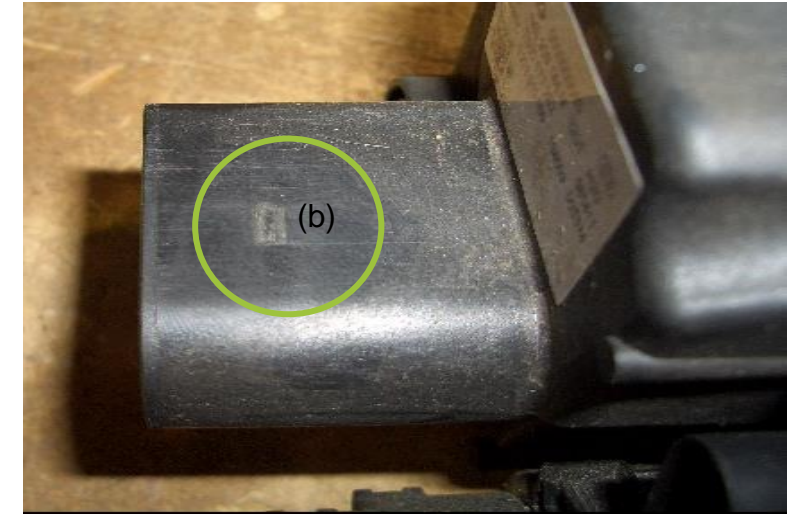
Criteria:

Mechanical damage

2. Damage on electrical plugs:
Plug broken (a) above rupture line
(1) and broken nose (b) is
acceptable



Acceptable



Acceptable

Electric steering

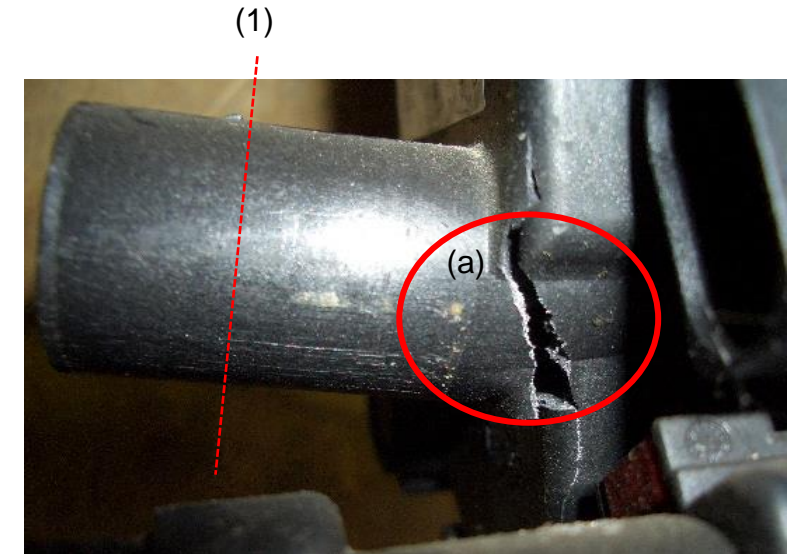
Criteria:

Mechanical damage

2. Damage on electrical plugs:
Plug broken (a) + (b) below
rupture line (1) is not acceptable



Not acceptable



Not acceptable

Electric steering

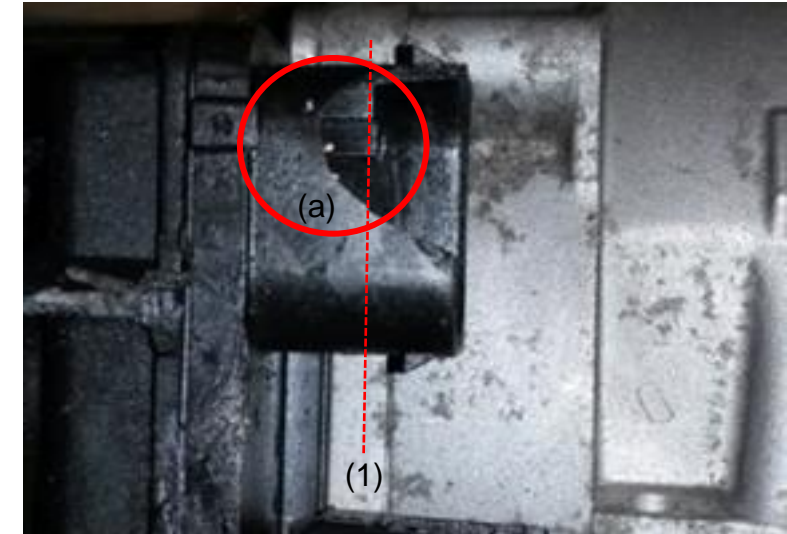
Criteria:

Mechanical damage

2. Damage on electrical plugs:
Plug broken (a) + (b) below
rupture line (1) is not acceptable



Not acceptable



Not acceptable

Electric steering

Criteria:

Mechanical damage

3. External repair:
Broken or welded steering tie rod is not acceptable



Not acceptable



Not acceptable

Electric steering

Criteria:

Mechanical damage

3. External repair:
Broken or welded steering tie rod is not acceptable



Acceptable



Not acceptable

Electric steering

Criteria:

Mechanical damage

4. Common mechanical damage:
Damaged housing is not acceptable



Not acceptable



Not acceptable

Electric steering

Criteria:

Mechanical damage

4. Common mechanical damage:
Damaged housing is not acceptable



Not acceptable



Not acceptable

Electric steering

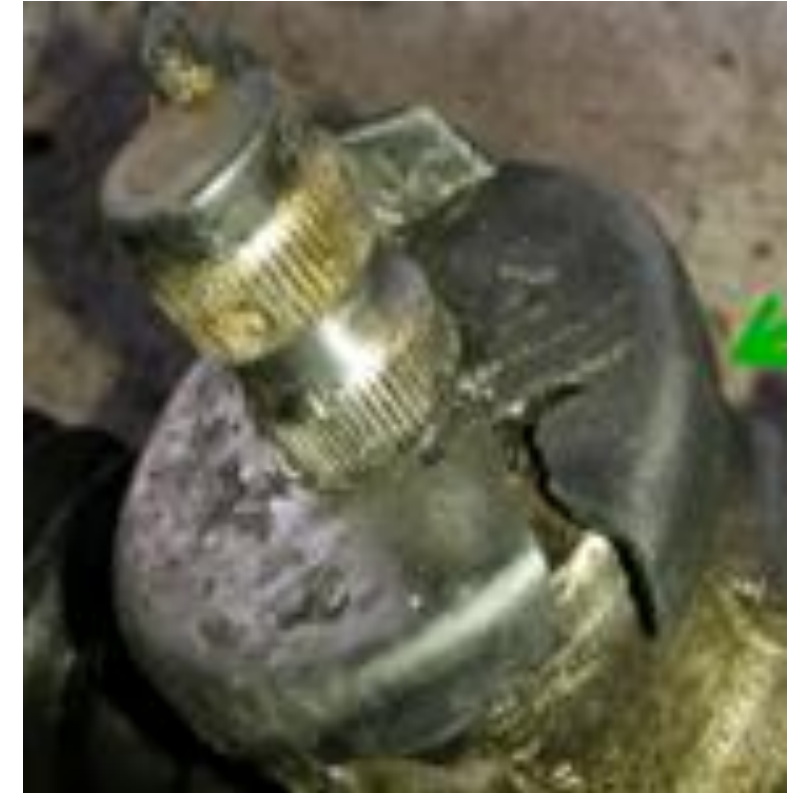
Criteria:

Mechanical damage

4. Common mechanical damage:
Damaged housing
is not acceptable;
Damaged plastic cap
is acceptable



Not acceptable



Acceptable

Electric steering

Criteria:

Mechanical damage

4. Common mechanical damage:
Damaged engine housing is not acceptable



Not acceptable

Electric steering

Criteria:

Mechanical damage

4. Common mechanical damage:
Damaged gearing is not acceptable



Not acceptable



Acceptable

Electric steering

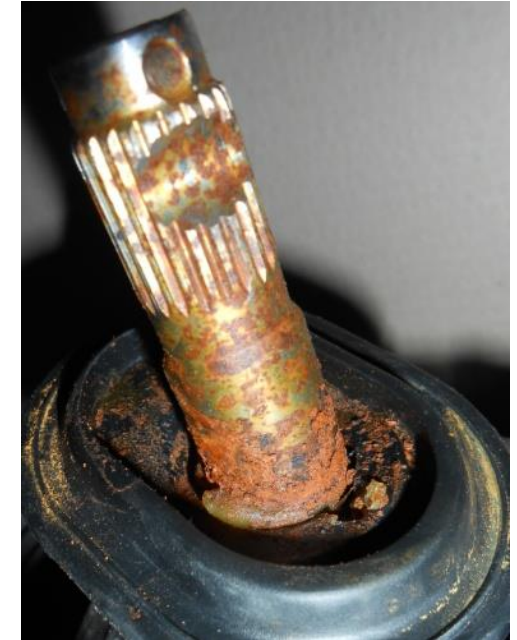
Criteria:

Corrosion

Slight corrosion and average corrosion on gearing is acceptable



Acceptable



Acceptable

Electric steering

Criteria:

Corrosion

Slight corrosion and average corrosion on tie rod is acceptable



Acceptable



Acceptable

Electric steering

Criteria:

Corrosion

Heavy corrosion on tie rod or gearing is not acceptable



Not acceptable



Not acceptable

Electric steering

Criteria:

Corrosion

Trapped water drain valve is acceptable



Acceptable