

## Hydraulic steering

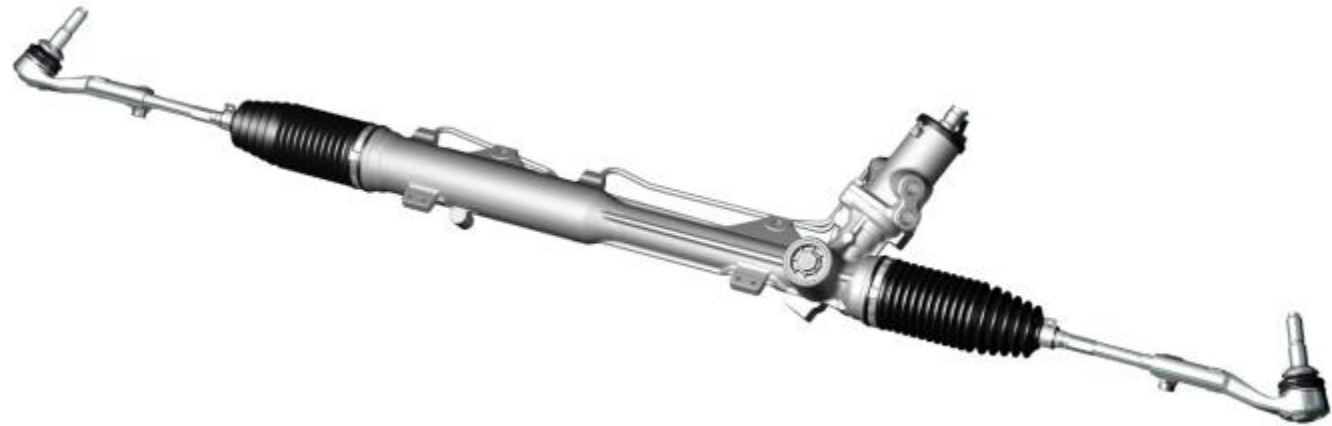
### Criteria:

Identification

Completeness

Mechanical damage

Corrosion



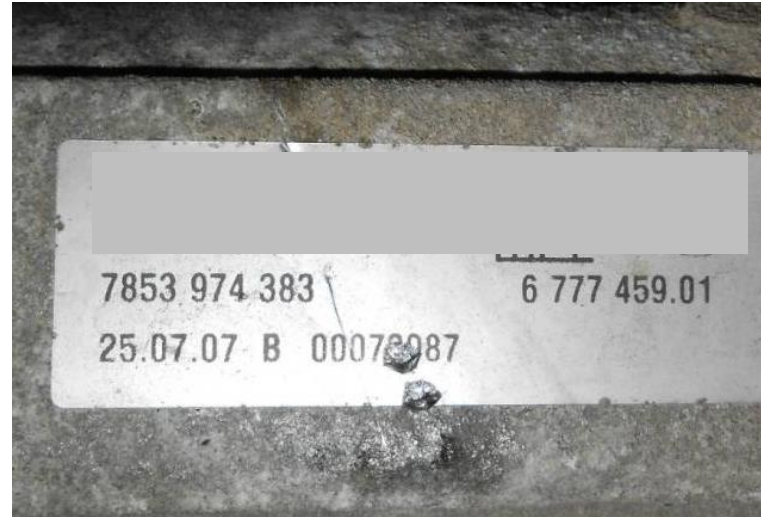
# Hydraulic steering

## Criteria:

### Identification

#### Order of identification:

- factory number on the part or
- Bosch exchange number (e.g. starting with 76..955...) on the part or
- Bosch exchange number (e.g. starting with 76... or KS ...) on the box



Acceptable

## Hydraulic steering

### Criteria:

#### Completeness

Incomplete or dismantled steering gears are not acceptable

## Hydraulic steering

### Criteria:

#### Mechanical damage

1. Accident damage
2. Damage on electronic plugs
3. External repair
4. Painted housing
5. Common mechanical damage

## Hydraulic steering

### Criteria:

#### Mechanical damage

1. Accident damage:  
Steering tie rod in same angle is acceptable



Acceptable

## Hydraulic steering

### Criteria:

#### Mechanical damage

1. Accident damage:  
Steering tie rod buckled,  
deformed or not in same angle  
is not acceptable



Not acceptable

## Hydraulic steering

### Criteria:

#### Mechanical damage

- 2. Damage on electrical plugs:
  - Damage on converter plug is acceptable
  - Damage on engine plug is not acceptable

Converter plug



Engine plug

## Hydraulic steering

### Criteria:

#### Mechanical damage

2. Damage on electrical plugs:  
Damage on electrical plugs is not acceptable



Acceptable



Not acceptable



## Hydraulic steering

### Criteria:

#### Mechanical damage

3. External repair:  
Broken or welded steering tie rod is not acceptable



Acceptable



Not acceptable

## Hydraulic steering

### Criteria:

#### Mechanical damage

3. External repair:  
Broken or welded steering tie rod is not acceptable



Not acceptable



Not acceptable

## Hydraulic steering

### Criteria:

#### Mechanical damage

4. Painted housing:  
Painted housings at hydraulic  
steerings are acceptable



Acceptable



Acceptable

## Hydraulic steering

### Criteria:

#### Mechanical damage

5. Common mechanical damage:  
Damaged gearing is not acceptable



Not acceptable



Acceptable

## Hydraulic steering

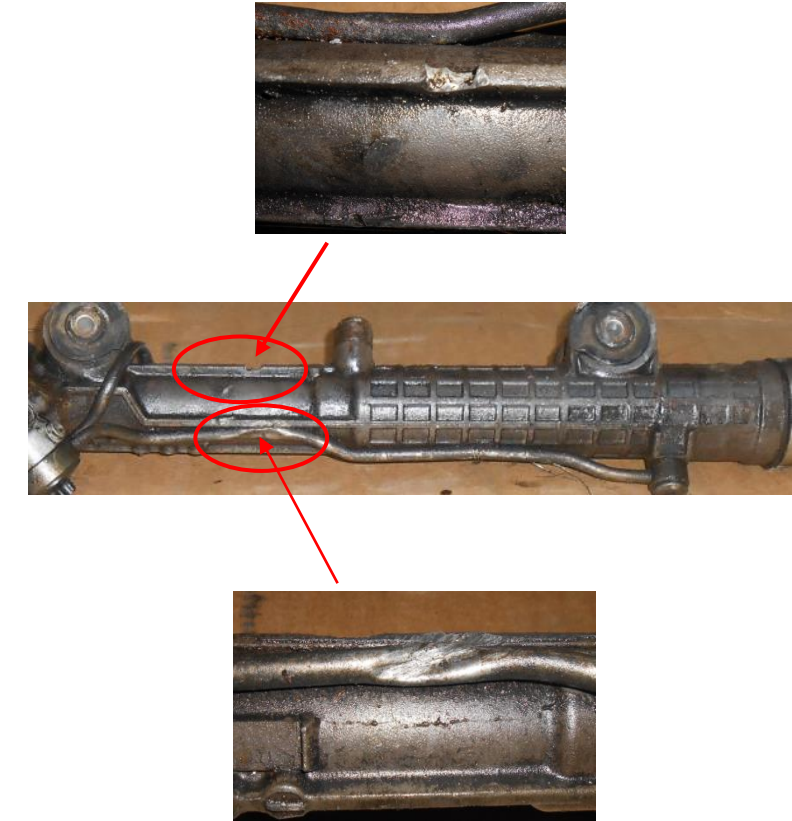
### Criteria:

#### Mechanical damage

5. Common mechanical damage:  
Housing broken or damaged is not acceptable



Not acceptable



Not acceptable



## Hydraulic steering

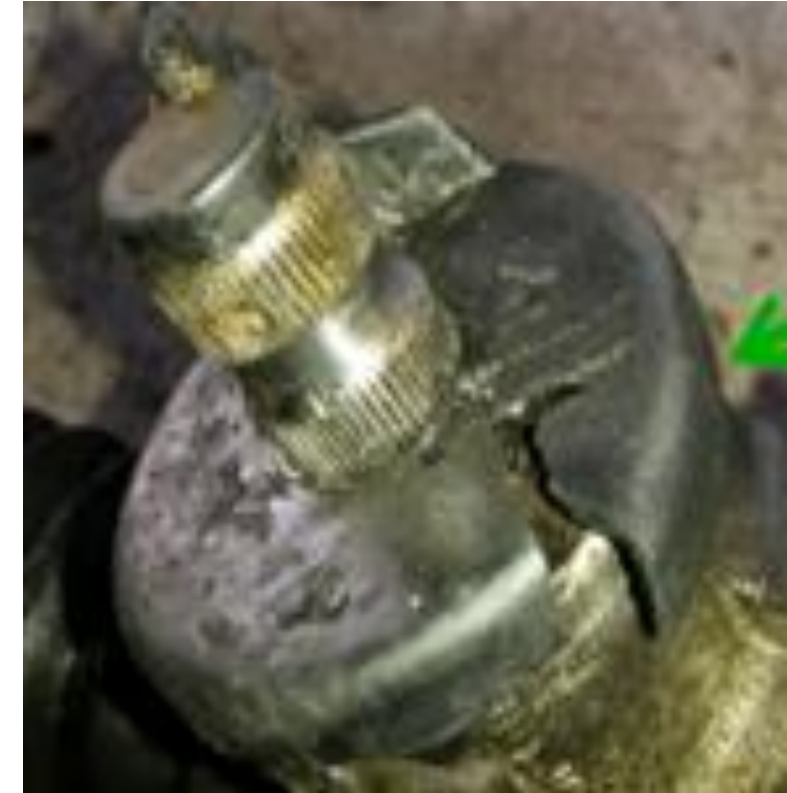
### Criteria:

#### Mechanical damage

5. Common mechanical damage:  
Damaged housing is not acceptable;  
Damaged plastic cap is acceptable



Not acceptable



Acceptable

## Hydraulic steering

### Criteria:

Mechanical damage

5. Common mechanical damage:  
Damaged or broken housing  
is not acceptable



Not acceptable



Not acceptable

## Hydraulic steering

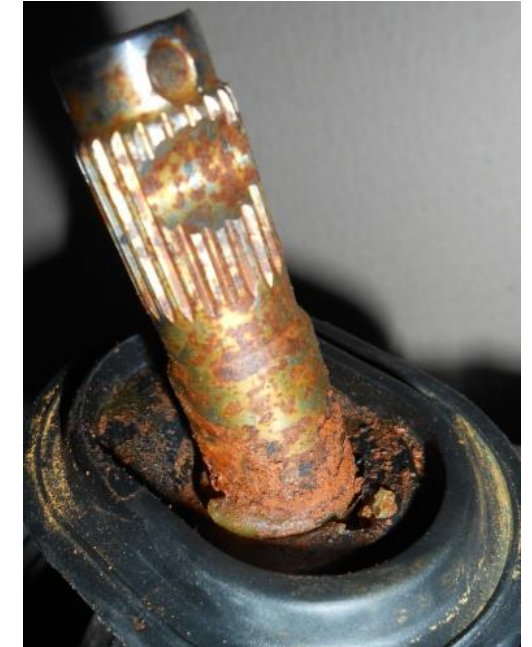
### Criteria:

#### Corrosion

Slight and average corrosion on gearing is acceptable



Acceptable



Acceptable



## Hydraulic steering

### Criteria:

Corrosion

Slight and average corrosion on valve is acceptable



Acceptable

Acceptable

# Hydraulic steering

## Criteria:

### Corrosion

The area of the rack shown here (under bellow) should be checked for corrosion under the bellows.



Acceptable

## Hydraulic steering

### Criteria:

#### Corrosion

Slight corrosion on tie rod is acceptable



Acceptable



Acceptable

## Hydraulic steering

### Criteria:

#### Corrosion

Average corrosion on tie rod is acceptable



Acceptable



Acceptable



## Hydraulic steering

### Criteria:

Corrosion

Heavy corrosion is not acceptable



Not acceptable



Not acceptable