

Nozzle and holder assembly

Criteria:

Identification

Completeness

Mechanical damage

Corrosion



Nozzle and holder assembly

Criteria:

Identification

Part number must be legible

Nozzle and holder assembly

Criteria:

Completeness

DHK dismantled or tube missing



Not acceptable



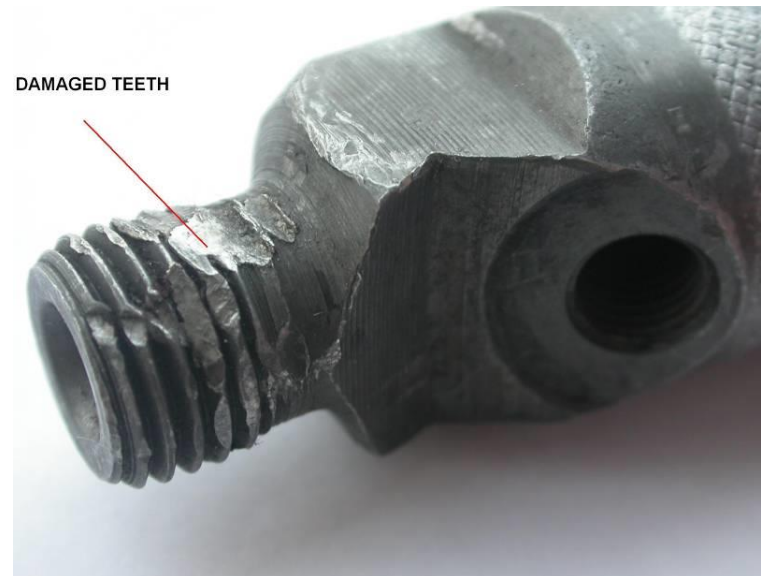
Not acceptable

Nozzle and holder assembly

Criteria:

Mechanical damage

Thread deformed, tube with inserted nuts or short tube



Not acceptable



Not acceptable

Nozzle and holder assembly

Criteria:

Corrosion

Strong corrosion on surface with material removal is not acceptable

Slight corrosion on surface without material removal is acceptable



Acceptable



Not acceptable