

# MANUFACTURER-SPECIFIC RETURN CRITERIA



## BPW Brake caliper

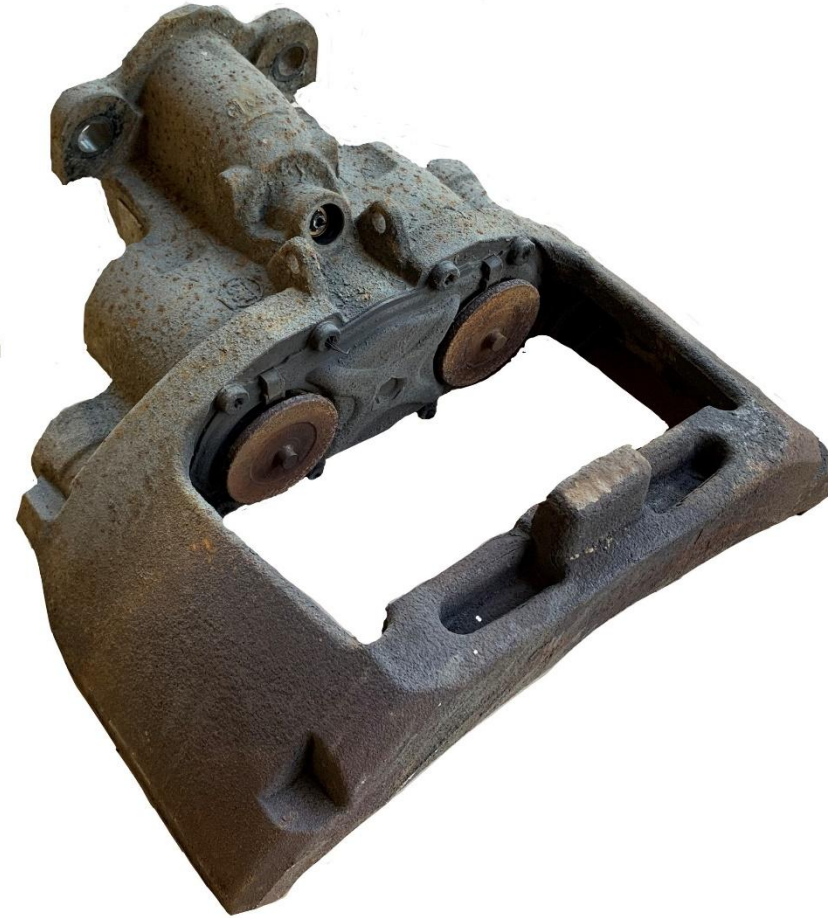
### Criteria:

Identification

Completeness

Mechanical damage

Corrosion



# MANUFACTURER-SPECIFIC RETURN CRITERIA



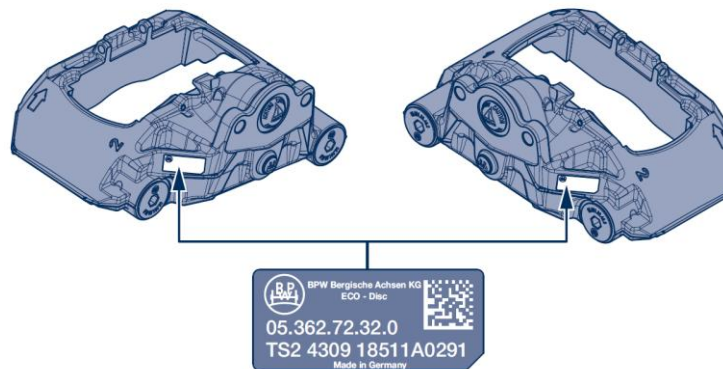
## BPW Brake caliper

### Criteria:

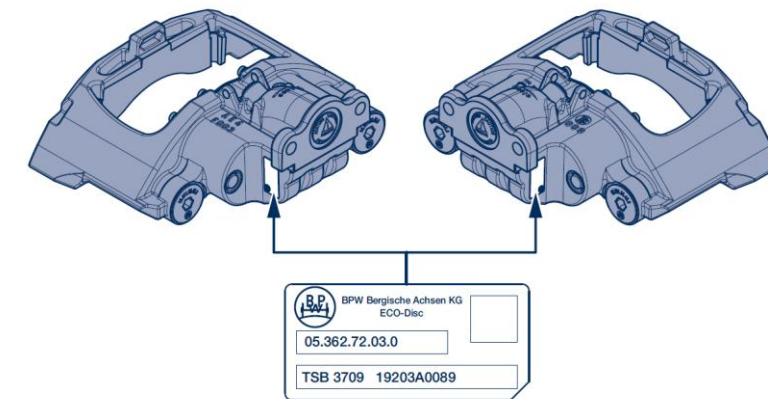
#### Identification

Calipers with non-BPW type label won't be accepted.

BPW calipers without type label will be accepted.



Acceptable



Acceptable

# MANUFACTURER-SPECIFIC RETURN CRITERIA



## BPW Brake caliper

### Criteria:

#### Completeness

Incomplete brake calipers won't be accepted.



Not acceptable

# MANUFACTURER-SPECIFIC RETURN CRITERIA



## BPW Brake caliper

### Criteria:

#### Completeness

Exceptions from the completeness criteria are:

TSB: tappets

TS2: central bellow



Acceptable



Acceptable

# MANUFACTURER-SPECIFIC RETURN CRITERIA

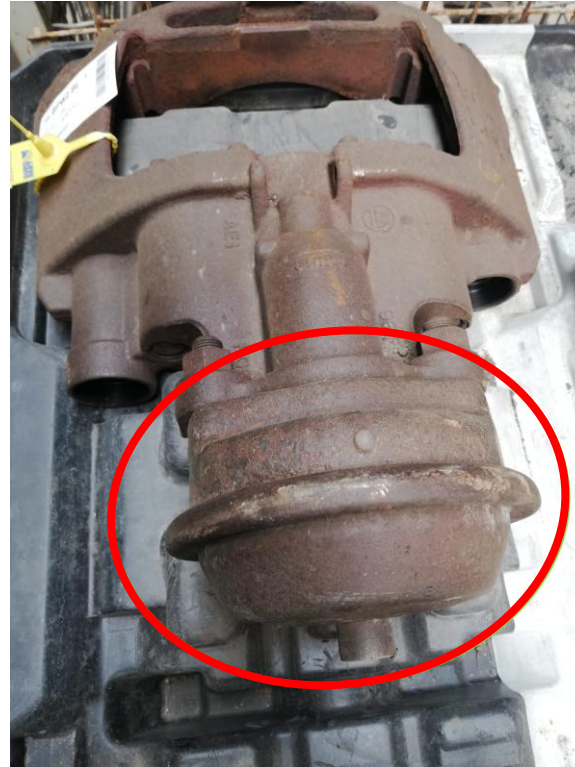


## BPW Brake caliper

### Criteria:

#### Completeness

Calipers with additional components (e.g. brake disc), which were not correctly removed, won't be accepted.



Not acceptable



Not acceptable

# MANUFACTURER-SPECIFIC RETURN CRITERIA



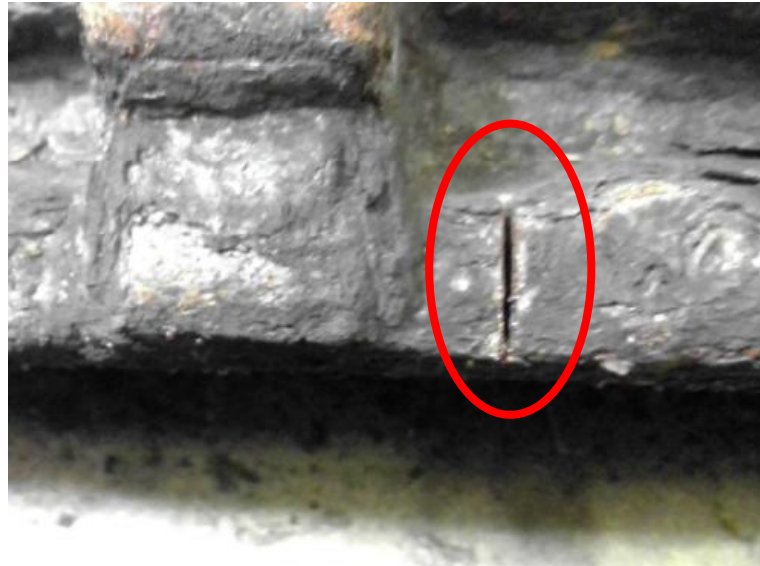
## BPW Brake caliper

### Criteria:

#### Mechanical damage

Calipers with cracks on the housing won't be accepted.

Calipers that have been operated with improperly worn brake pads won't be accepted.



Not acceptable



Not acceptable

# MANUFACTURER-SPECIFIC RETURN CRITERIA



## BPW Brake caliper

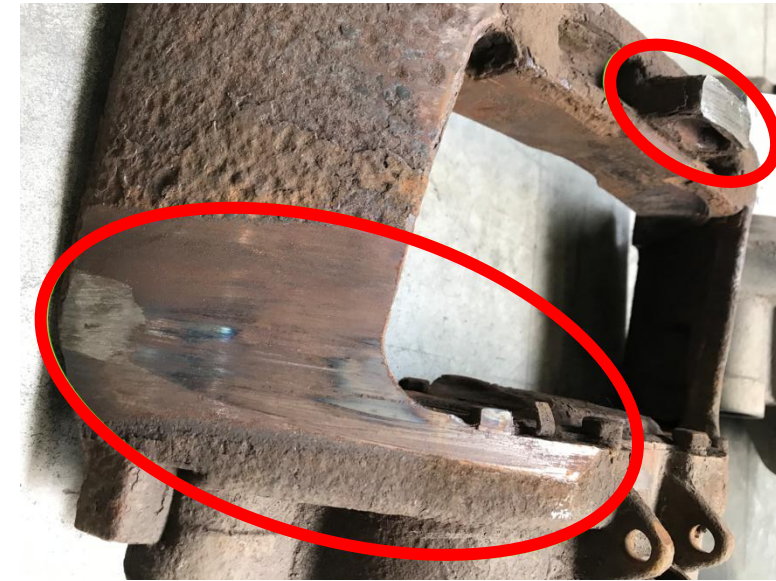
### Criteria:

#### Mechanical damage

Calipers with deep indentations or drag marks on the housing won't be accepted.



Not acceptable



Not acceptable

# MANUFACTURER-SPECIFIC RETURN CRITERIA



## BPW Brake caliper

### Criteria:

#### Mechanical damage

Calipers with fractures or drag marks on the housing won't be accepted.



Not acceptable



Not acceptable



# MANUFACTURER-SPECIFIC RETURN CRITERIA



## BPW Brake caliper

### Criteria:

#### Mechanical damage

Calipers with deformation of the housing won't be accepted.

Calipers with bent tappets will be accepted.

Calipers with damaged cover plates will be accepted.



Not acceptable



Acceptable

# MANUFACTURER-SPECIFIC RETURN CRITERIA



## BPW Brake caliper

### Criteria:

#### Mechanical damage

Calipers with minor mechanical damages will be accepted.

The extent of the damage and the resulting acceptance decision will be assessed for each caliper individually.



Acceptable

# MANUFACTURER-SPECIFIC RETURN CRITERIA



## BPW Brake caliper

### Criteria:

#### Corrosion

Calipers with corrosion due to incorrect storage (not covered/no dry storage) won't be accepted.

Calipers with corrosion due to proper use will be accepted.



Acceptable



Acceptable

# MANUFACTURER-SPECIFIC RETURN CRITERIA

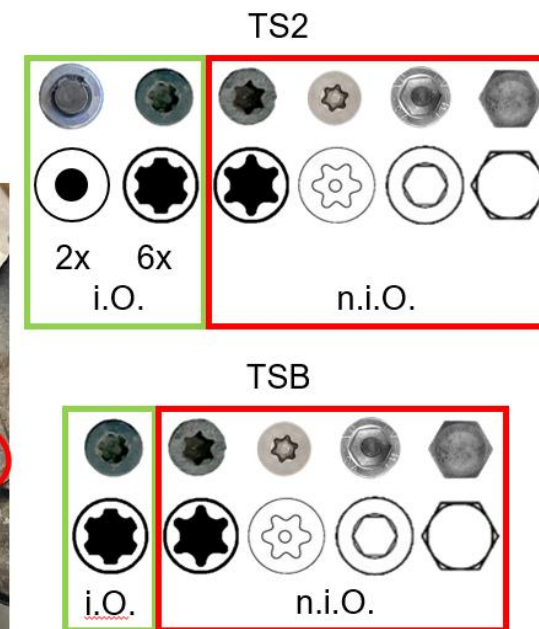


## BPW Brake caliper

### Additional information

Only genuine BPW brake calipers are acceptable.

Non-BPW brake calipers or calipers remanufactured/ repaired by third-parties are not acceptable.



# MANUFACTURER-SPECIFIC RETURN CRITERIA



## BPW Brake caliper

### Additional information

Only genuine cover plates are acceptable.



Acceptable



Acceptable