

Clutch pneumatic concentric actuator

Criteria:

Identification

Completeness

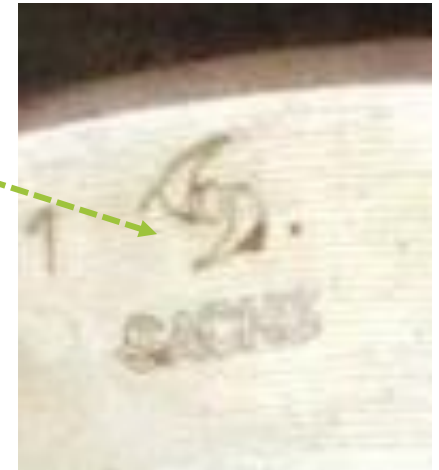


Clutch pneumatic concentric actuator

Criteria:

Identification

Brand must be legible on the part (see exemplary picture).



Acceptable

Clutch pneumatic concentric actuator

Criteria:

Identification

If no SACHS symbol, but SACHS OE - then it is acceptable as well.



Acceptable



Acceptable

Clutch pneumatic concentric actuator

Criteria:

Completeness

Part must be complete and not disassembled;

Missing sensor is acceptable.



Acceptable