

Pneumatic clutch actuation

Criteria:

Identification

Completeness

Mechanical damage

Corrosion

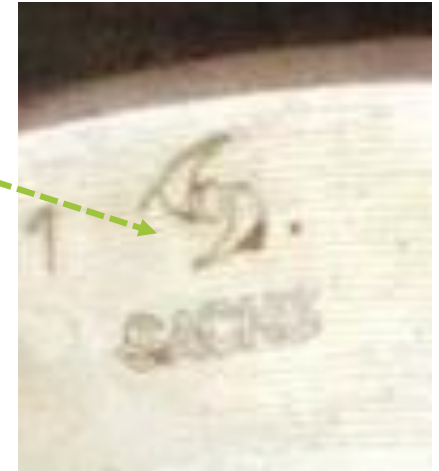


Pneumatic clutch actuation

Criteria:

Identification

Brand must be legible on the part (see exemplary picture).



Acceptable

Pneumatic clutch actuation

Criteria:

Completeness

Part must be complete and not disassembled

Pneumatic clutch actuation

Criteria:

Mechanical damage

Part should not be mechanically damaged or broken

Pneumatic clutch actuation

Criteria:

Corrosion

Heavy or extensive corrosion is not acceptable