

## Clutch Components

### Criteria:

Identification

Completeness

Mechanical damage

Corrosion



Clutch pressure plate



Clutch disc

## Clutch disc

### Criteria:

#### Identification

Brand must be legible on the part



Acceptable



Acceptable

## Clutch Pressure Plate

### Criteria:

#### Identification

Brand must be legible on the part (see exemplary picture).



Acceptable



Acceptable

## Clutch Disc

### Criteria:

#### Completeness

Acceptable with

- missing torsional damper springs - if hub is not broken
- missing friction material



Acceptable



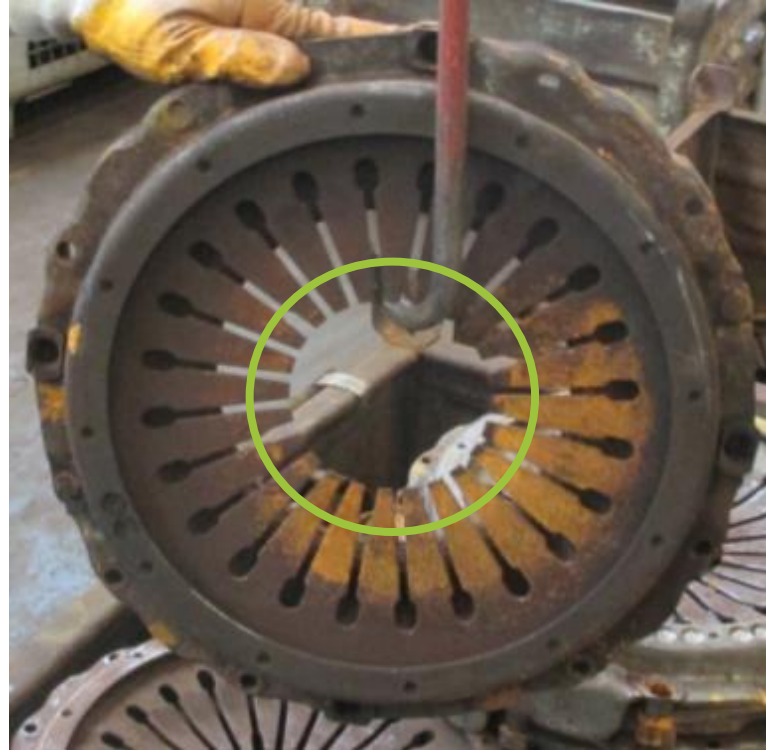
Acceptable

## Clutch Pressure Plate

### Criteria:

#### Completeness

Pressure Plate is acceptable if releaser is missing, no need to dismantle it.



Acceptable

## Clutch Disc

### Criteria:

#### Mechanical damage

Not acceptable if

- clutch disc is bent or broken
- hub is broken
- damper is broken



Not acceptable



Not acceptable

## Clutch Pressure Plate

### Criteria:

Mechanical damage

Not acceptable if cover is broken or distorted



Not acceptable

## Clutch Disc

### Criteria:

#### Corrosion

Slight corrosion is acceptable,  
heavy corrosion is not  
acceptable



Not acceptable



## Clutch Pressure Plate

### Criteria:

Corrosion

Corrosion is acceptable



Acceptable