

Electro hydraulic brakes (EHB)

Criteria:

Identification

Completeness

Mechanical damage

Corrosion

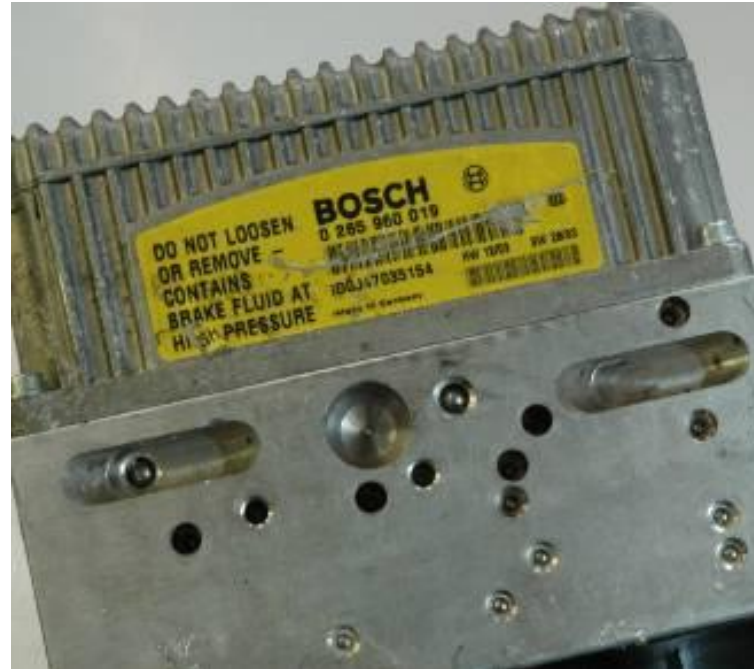


Electro hydraulic brakes (EHB)

Criteria:

Identification

Part number must be legible



Acceptable

Electro hydraulic brakes (EHB)

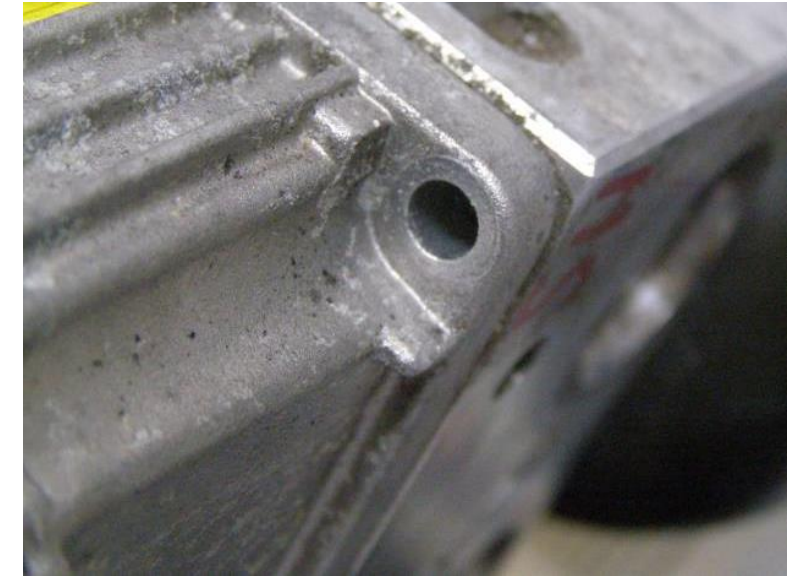
Criteria:

Completeness

Aggregate open or missing screws is not acceptable



Not acceptable



Not acceptable

Electro hydraulic brakes (EHB)

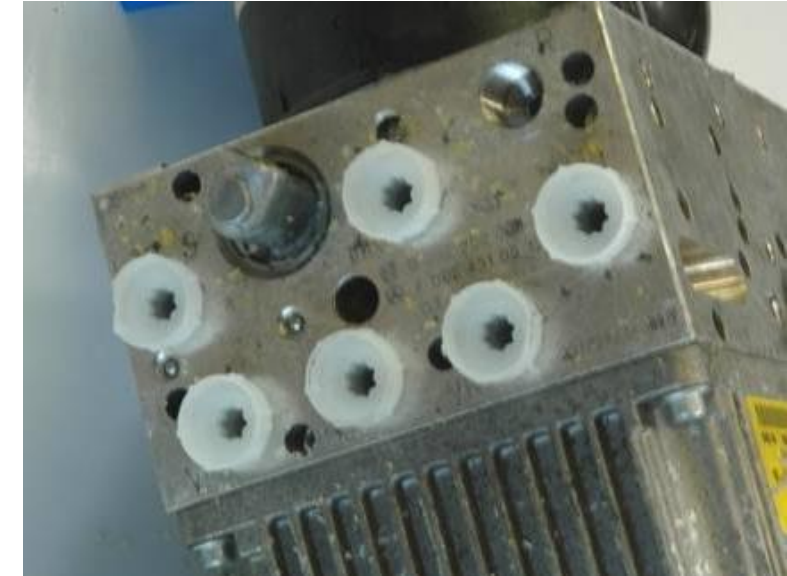
Criteria:

Mechanical damage

Screw damaged or broken
intake connection is not
acceptable



Not acceptable



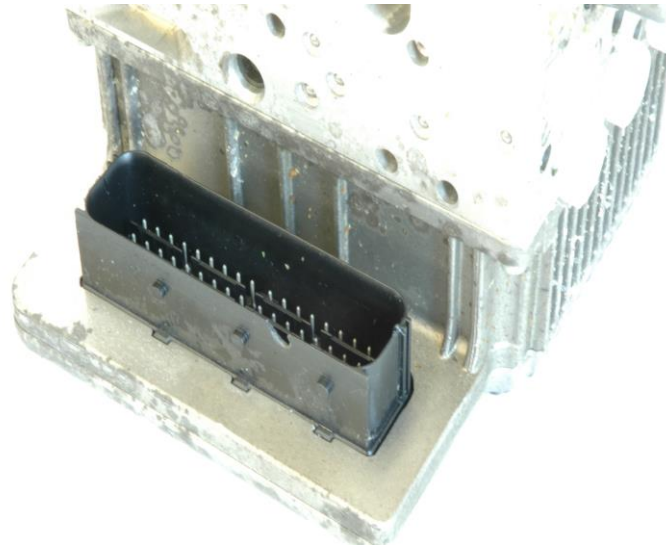
Not acceptable

Electro hydraulic brakes (EHB)

Criteria:

Mechanical damage

Plug connector damaged is not acceptable



Not acceptable

Electro hydraulic brakes (EHB)

Criteria:

Corrosion

Corrosion is not relevant