

Parts kit PSG5 / individual parts

Criteria:

Identification

Completeness

Mechanical damage

Corrosion



Comments

- ECU and DMV10 must be processed one by one (DMV12 is not relevant).
- Therefore, it is irrelevant if the kit is complete.
- During the identification, the kit parts have to be separated and valued as individual parts.
- If items come back individually, these are processed as usual.

Parts kit PSG5 / individual parts

Criteria:

Identification

Part number must be legible



Identification DMV10

Acceptable



Identification control unit

Acceptable

Parts kit PSG5 / individual parts

Criteria:

Completeness

Missing components are acceptable



Acceptable



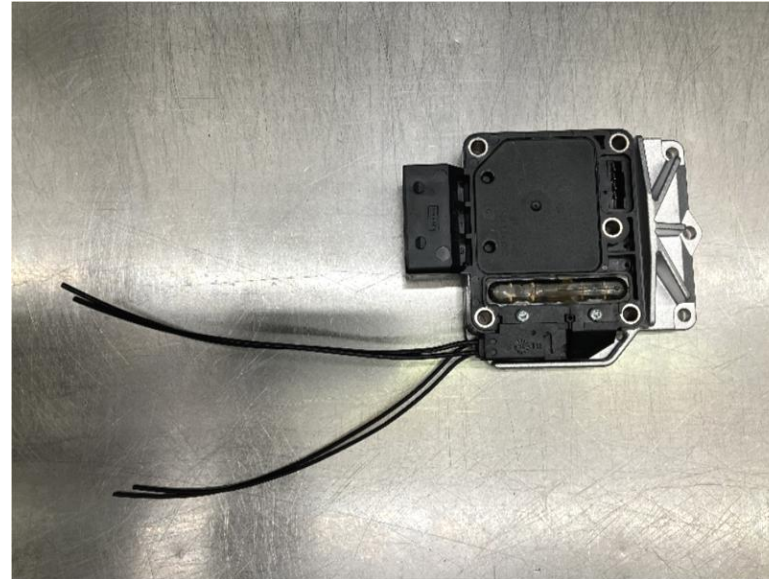
Acceptable

Parts kit PSG5 / individual parts

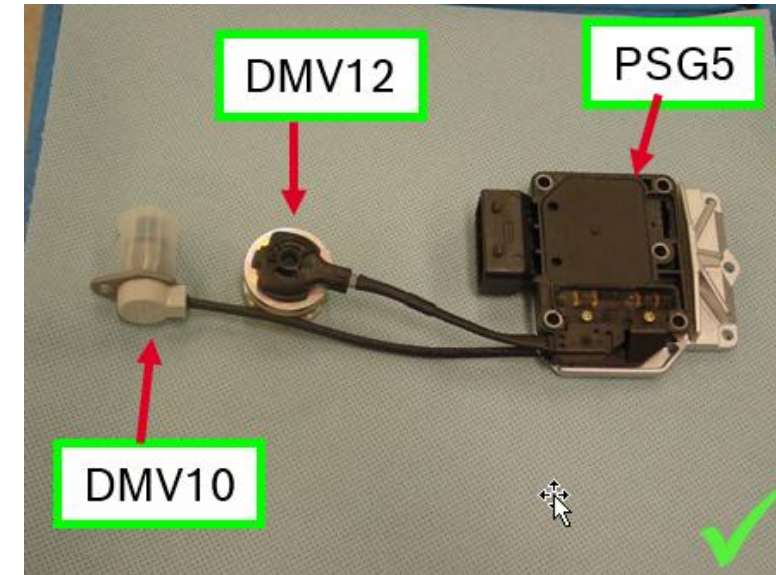
Criteria:

Completeness

Missing components are acceptable



Acceptable



Acceptable

Parts kit PSG5 / individual parts

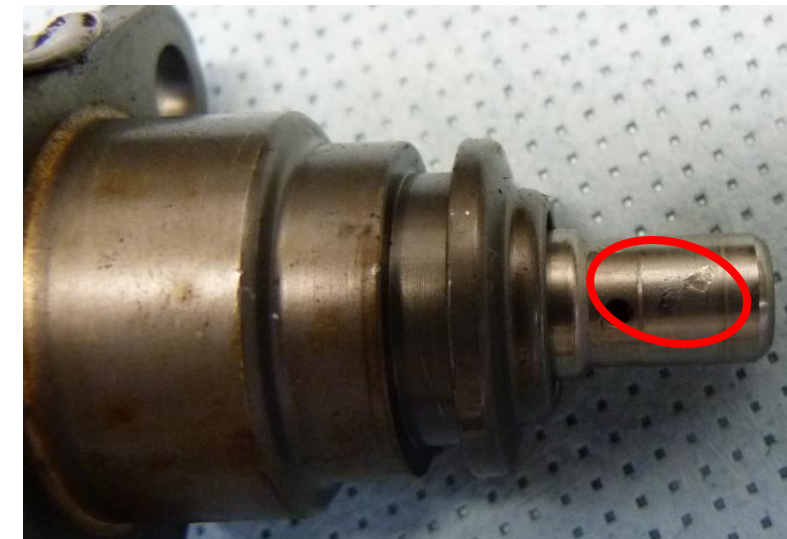
Criteria:

Mechanical damage

Damages and outbreaks of the valve body are not acceptable



Not acceptable



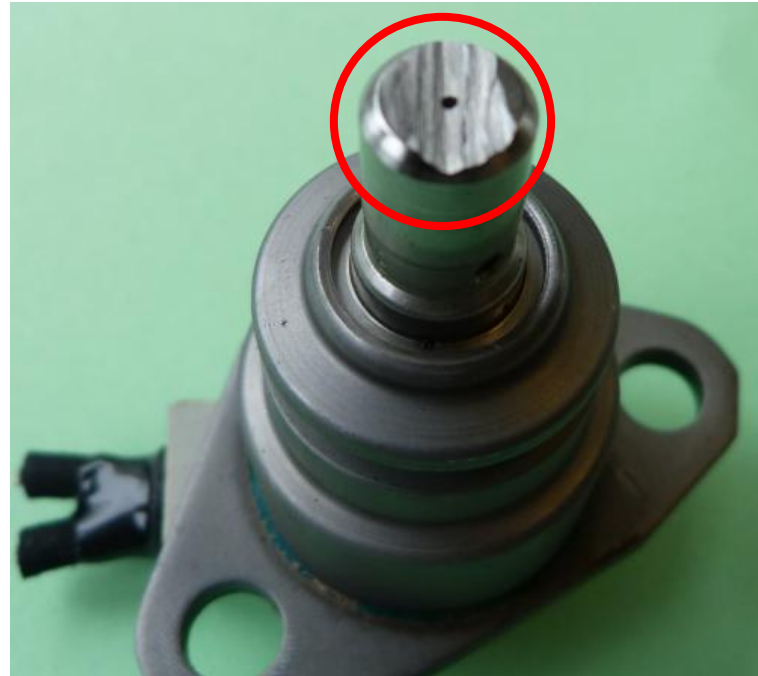
Not acceptable

Parts kit PSG5 / individual parts

Criteria:

Mechanical damage

Damages to the face of the valve body are not acceptable



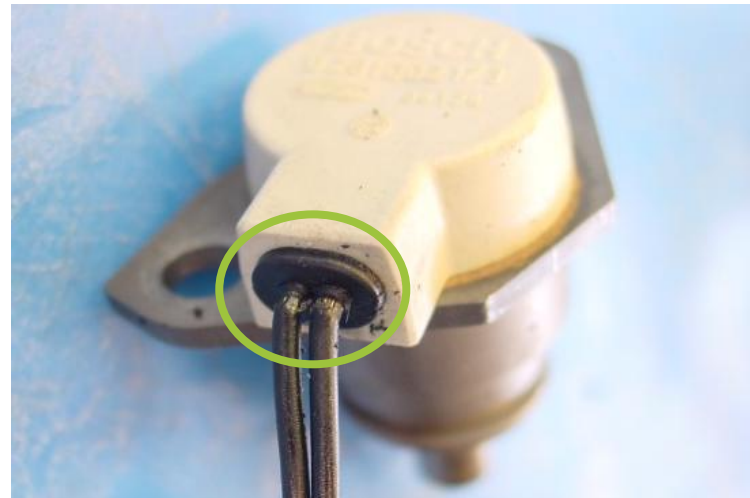
Not acceptable

Parts kit PSG5 / individual parts

Criteria:

Mechanical damage

Damaged cable/isolation is acceptable



Acceptable



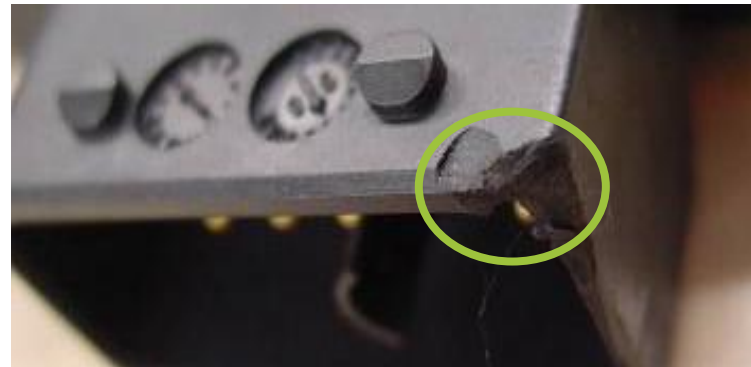
Acceptable

Parts kit PSG5 / individual parts

Criteria:

Mechanical damage

Damages on electrical connections of the controller are acceptable



Acceptable



Acceptable

Parts kit PSG5 / individual parts

Criteria:

Corrosion

Corrosion on the valve body or flange is acceptable

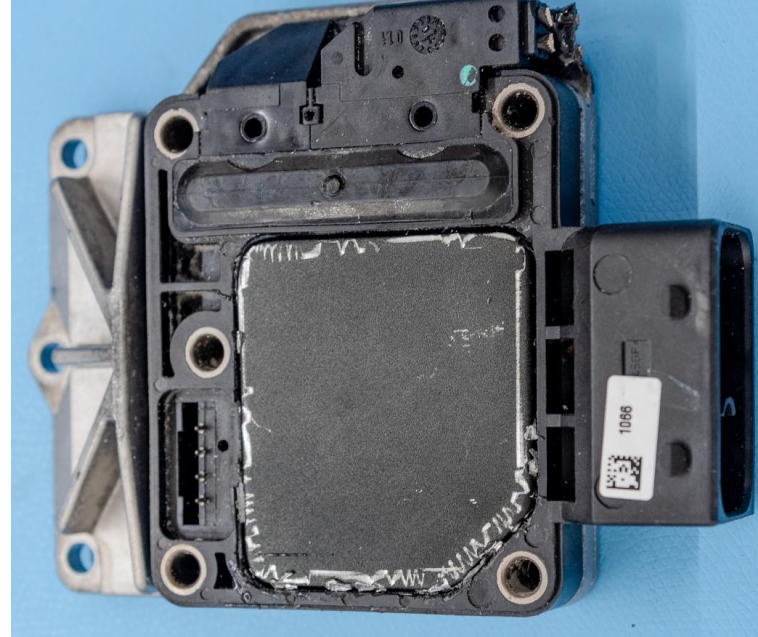


Acceptable

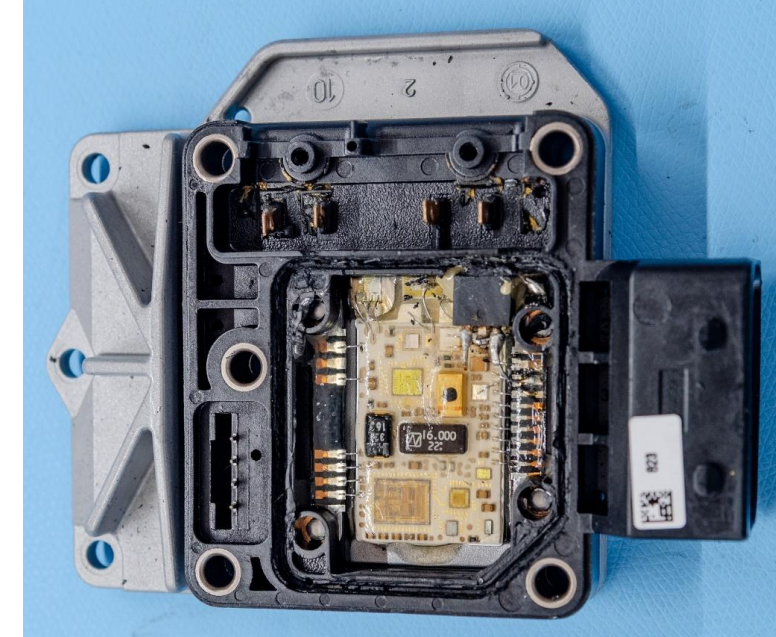
Parts kit PSG5 / individual parts

Additional information

Opened PSG5 with and without cover will not be accepted.



Acceptable



Not acceptable