

Parts kit PSG5 / individual parts

Criteria:

Identification

Completeness

Mechanical damage

Corrosion



Comments

- All parts of the kit must be assessed one by one.
- Therefore, it is irrelevant if the kit is complete.
- During the identification, the kit parts have to be separated and valued as individual parts.
- If items come back individually, these are assessed as usual.

Parts kit PSG5 / individual parts

Criteria:

Identification

Part number must be legible



Identification DMV10

Acceptable



Identification control unit

Acceptable

Parts kit PSG5 / individual parts

Criteria:

Completeness

Missing cable



Acceptable

Parts kit PSG5 / individual parts

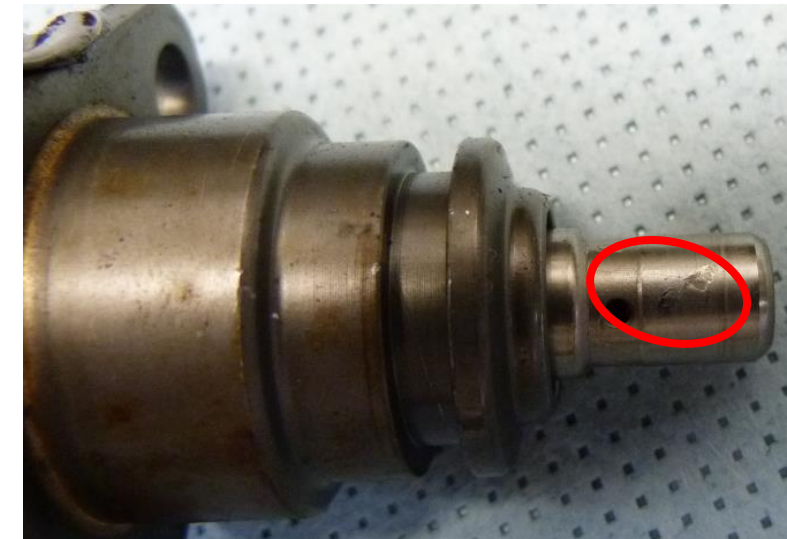
Criteria:

Mechanical damage

Damages and outbreaks of the valve body



Not acceptable



Not acceptable

Parts kit PSG5 / individual parts

Criteria:

Mechanical damage

Damages to the face of the valve body



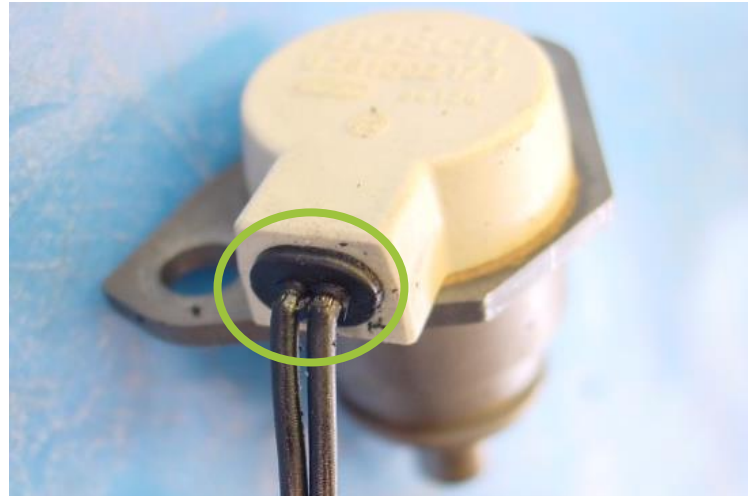
Not acceptable

Parts kit PSG5 / individual parts

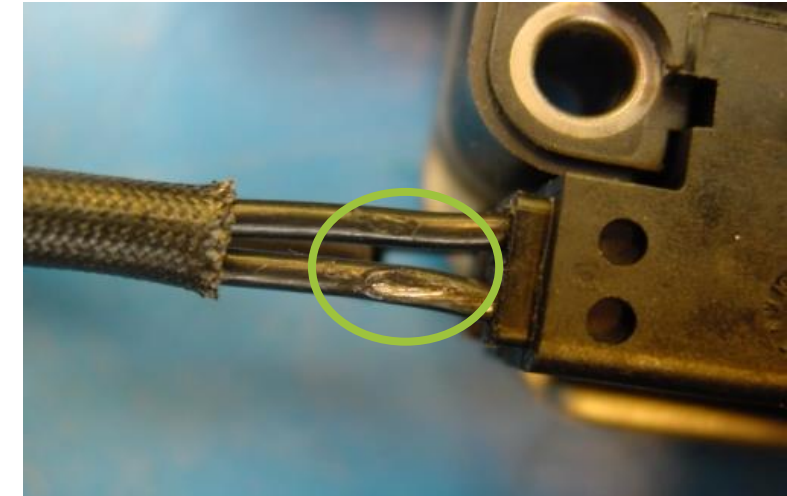
Criteria:

Mechanical damage

Damaged cable/isolation



Acceptable



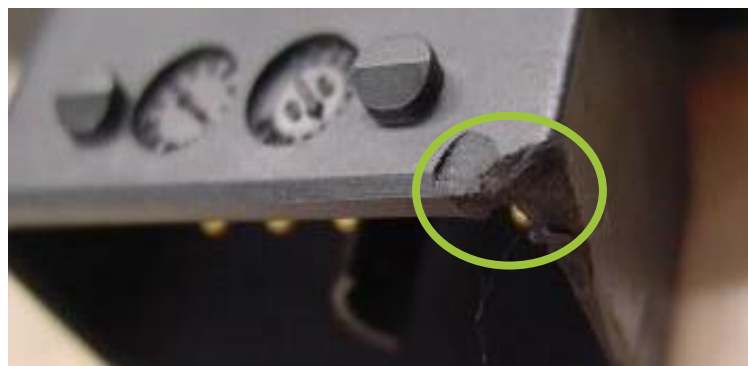
Acceptable

Parts kit PSG5 / individual parts

Criteria:

Mechanical damage

Damages on electrical connections of the controller



Acceptable



Acceptable

Parts kit PSG5 / individual parts

Criteria:

Corrosion

Corrosion on the valve body
or flange



Acceptable