

Hydraulic steering

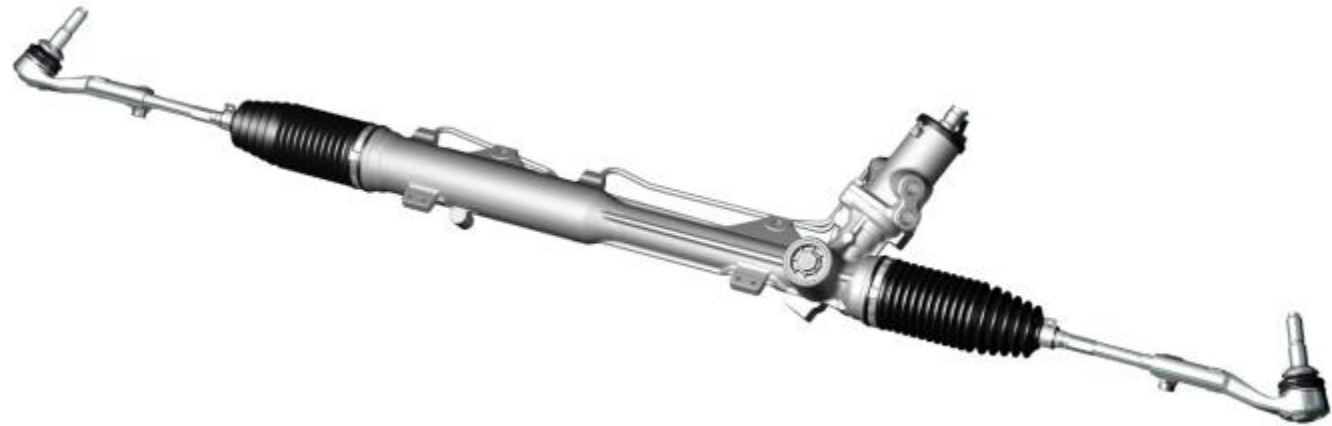
Criteria:

Identification

Completeness

Mechanical damage

Corrosion



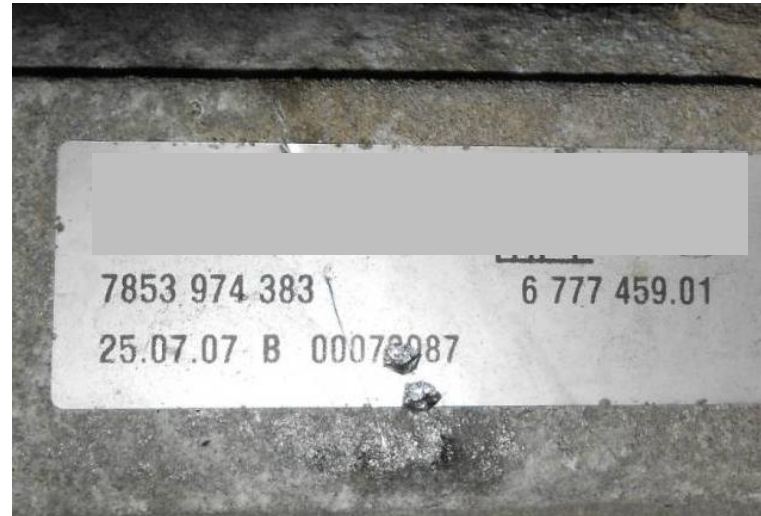
Hydraulic steering

Criteria:

Identification

Order of identification:

- factory number on the part or
- Bosch exchange number (e.g. starting with 76..955...) on the part or
- Bosch exchange number (e.g. starting with 76... or KS ...) on the box



Acceptable

Hydraulic steering

Criteria:

Completeness

Incomplete or dismantled steering gears are not acceptable

Hydraulic steering

Criteria:

Mechanical damage

1. Accident damage
2. Damage on electronic plugs
3. External repair
4. Painted housing
5. Common mechanical damage

Hydraulic steering

Criteria:

Mechanical damage

1. Accident damage:
Steering tie rod in same angle



Acceptable

Hydraulic steering

Criteria:

Mechanical damage

1. Accident damage:
Steering tie rod buckled,
deformed or not in same angle



Not acceptable

Hydraulic steering

Criteria:

Mechanical damage

2. Damage on electrical plugs:
Damage on electrical plugs is not acceptable



Acceptable



Not acceptable

Hydraulic steering

Criteria:

Mechanical damage

3. External repair:
Broken or welded steering tie rod is not acceptable



Acceptable



Not acceptable

Hydraulic steering

Criteria:

Mechanical damage

3. External repair:
Broken or welded steering tie rod is not acceptable



Not acceptable



Not acceptable

Hydraulic steering

Criteria:

Mechanical damage

4. Painted housing:
Painted housings at hydraulic
steerings is not acceptable



Acceptable



Not acceptable

Hydraulic steering

Criteria:

Mechanical damage

5. Common mechanical damage:
Damaged gearing is not acceptable



Not acceptable



Acceptable

Hydraulic steering

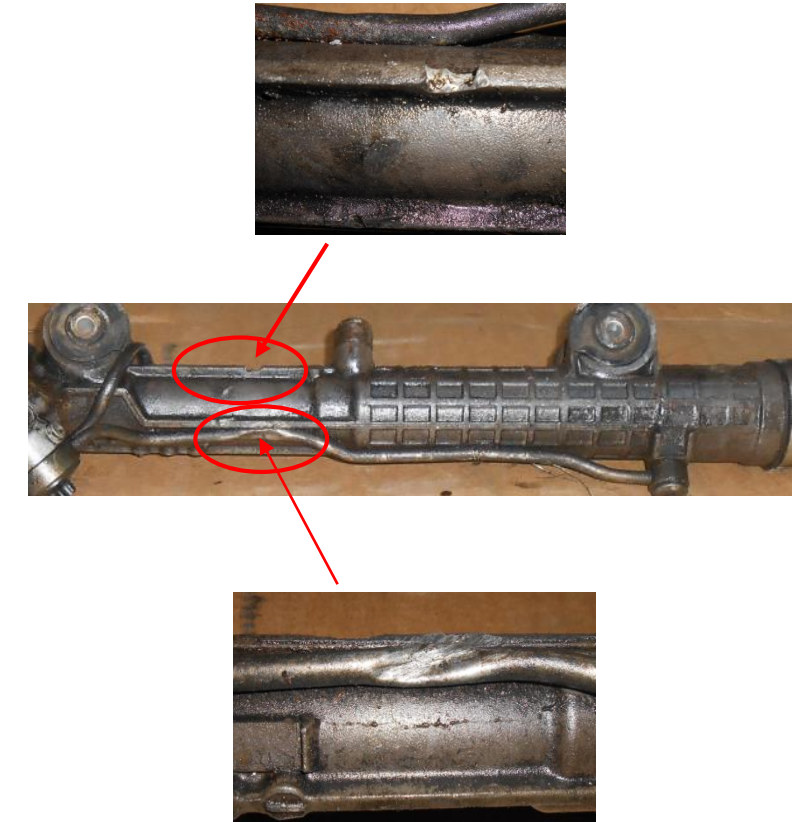
Criteria:

Mechanical damage

5. Common mechanical damage:
Housing broken or damaged is not acceptable



Not acceptable



Not acceptable

Hydraulic steering

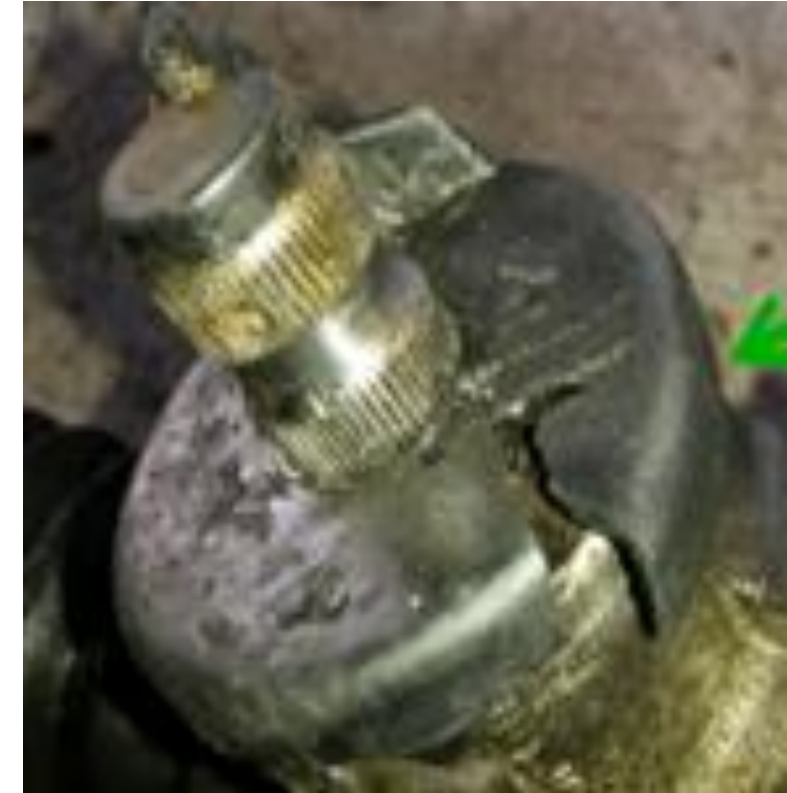
Criteria:

Mechanical damage

5. Common mechanical damage:
Damaged housing is not acceptable;
Damaged plastic cap is acceptable



Not acceptable



Acceptable

Hydraulic steering

Criteria:

Mechanical damage

5. Common mechanical damage:
Damaged or broken housing
is not acceptable



Not acceptable



Not acceptable

Hydraulic steering

Criteria:

Corrosion

1. Corrosion under bellow
2. Corrosion (water damage)

Hydraulic steering

Criteria:

Corrosion

1. Corrosion under bellow:
The area of the rack shown here should be checked for corrosion under the bellows.
In this example, the result is very good and therefore allowed!



Acceptable

Hydraulic steering

Criteria:

Corrosion

2. Corrosion (water damage):
Corrosion on rack is acceptable if it corresponds to the cross pattern



Acceptable



Acceptable

Hydraulic steering

Criteria:

Corrosion

2. Corrosion (water damage):
Corrosion on rack is not acceptable if it does not correspond to the cross pattern



Not acceptable



Not acceptable

Hydraulic steering

Storage/Sorting:

Place cleaned steering in boxes.
Do not put steering on top without layer in between.

The valve may not point to the outside of the box but to the inside

No part of the steering is allowed to stick out of the box.



Acceptable



Not acceptable