

Power Cylinder

Criteria:

Identification

Completeness

Mechanical damage

Corrosion



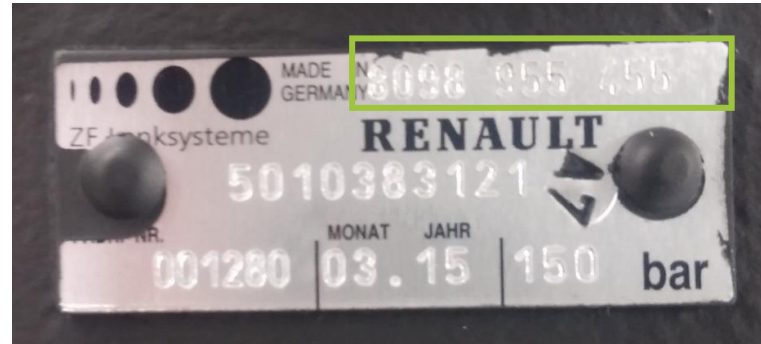
Power Cylinder

Criteria:

Identification

Order of identification:

- factory number on the part or
- Bosch exchange number (e.g. starting with 8098..955...) on the part or
- Bosch exchange number (e.g. starting with 8098... or KS...) on the box



Acceptable

Power Cylinder

Criteria:

Completeness

Incomplete or dismantled power cylinders are not acceptable



Acceptable

Power Cylinder

Criteria:

Mechanical damage

Mechanical damage is not acceptable



Acceptable

Power Cylinder

Criteria:

Corrosion

Slight and average corrosion is acceptable



Acceptable



Acceptable

Power Cylinder

Criteria:

Corrosion

Heavy corrosion is not acceptable



Not acceptable