

## Electric steering pump

### Criteria:

Identification

Completeness

Mechanical damage

Corrosion



# Electric steering pump

## Criteria:

### Identification

Order of identification:

- Factory number on the part or
- Bosch exchange number (e.g. starting with 76..955...) on the part or
- Bosch exchange number (e.g. starting with 76... or KS...) on the box



Acceptable

## Electric steering pump

### Criteria:

#### Completeness

Incomplete parts are not acceptable

## Electric steering pump

### Criteria:

#### Mechanical damage

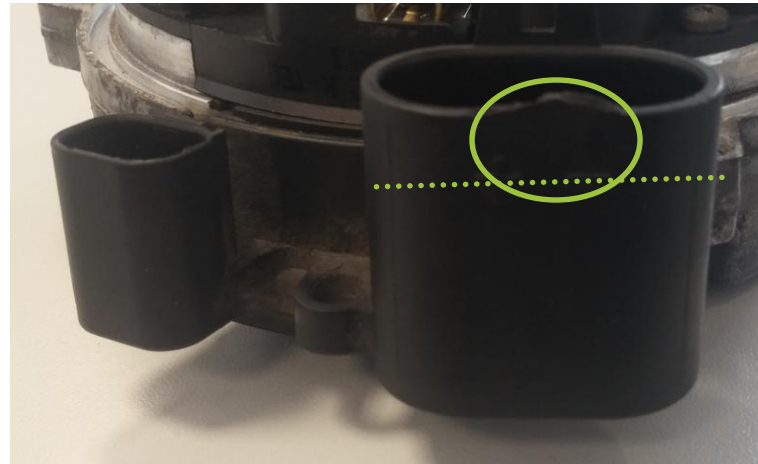
1. Broken plug
2. Common mechanical damage
3. Fire damage

# Electric steering pump

## Criteria:

### Mechanical damage

1. Broken plug:  
Broken nose on connector is acceptable;  
power supply connector broken below nose is not acceptable



Acceptable



Not acceptable

## Electric steering pump

### Criteria:

#### Mechanical damage

- 2. Common mechanical damage and
- 3. Fire damage:  
Damages on housing is not acceptable;  
Broken ODB-pins or fire damages are not acceptable



Not acceptable



Not acceptable

## Electric steering pump

### Criteria:

Corrosion

Corrosion is not acceptable

# Electric steering pump

## Storage

The pumps should be stored in product box to not be damaged while transported.

The pumps should be stored clean in line. Use layer in between rows.



Acceptable



Not acceptable