

Turbo charger

Criteria:

Identification

Completeness

Mechanical damage

Corrosion



Turbo charger

Criteria:

Identification

Part number must be legible

Not identifiable/lack of label/label not readable is not acceptable



Acceptable



Not acceptable

Turbo charger

Criteria:

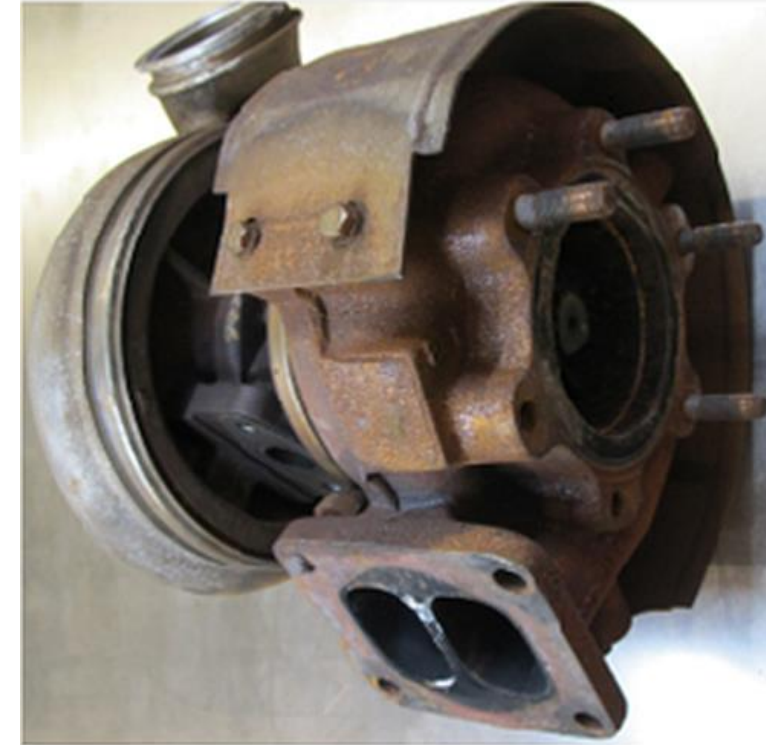
Completeness

Not acceptable missing parts are:
housing parts, adjusting unit,
Pressure cans or electric actuator
or dismantled parts

Acceptable missing parts are:
Heat apron, stand studs, tubes
and hoses or clamp



Not acceptable



Acceptable

Turbo charger

Criteria:

Mechanical damage

Damages on compression wheel is acceptable



Acceptable

Turbo charger

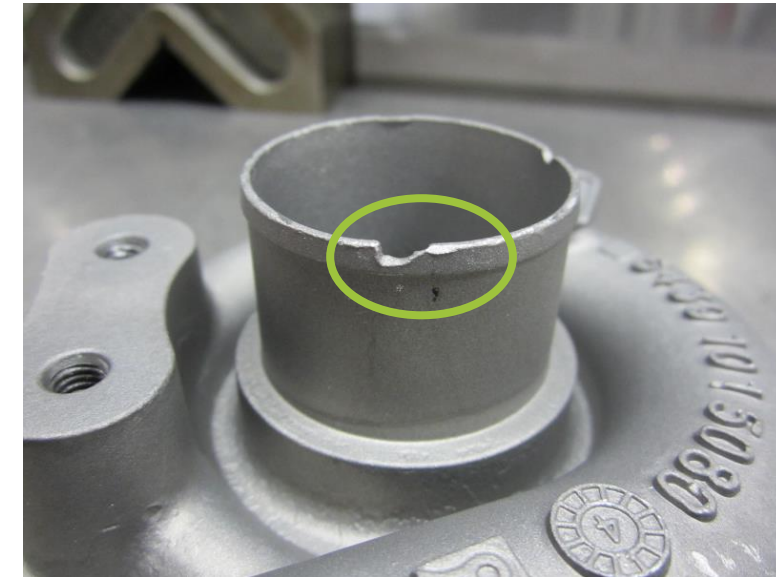
Criteria:

Mechanical damage

Damages on flange are acceptable



Acceptable



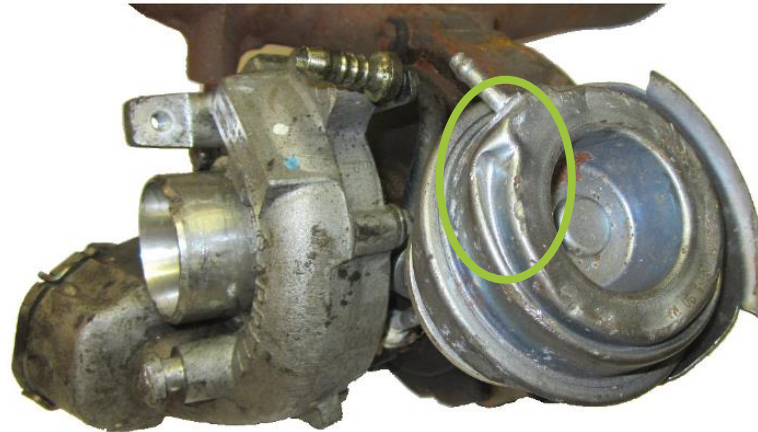
Acceptable

Turbo charger

Criteria:

Mechanical damage

Big bulges and damages on actuator are acceptable



Acceptable



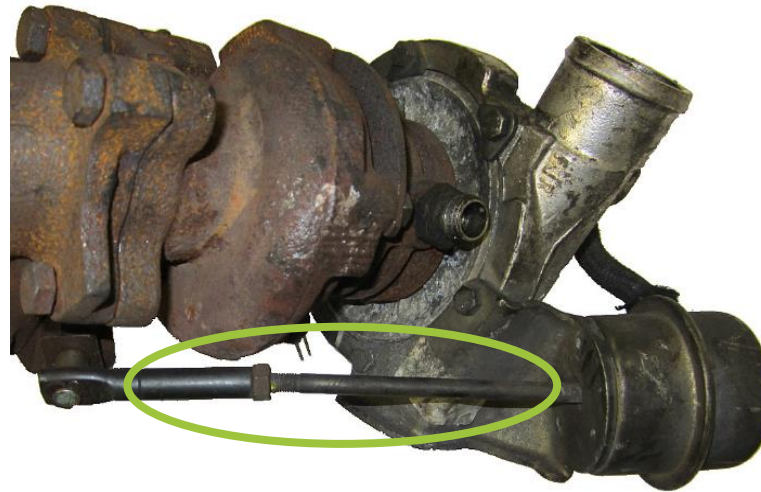
Acceptable

Turbo charger

Criteria:

Mechanical damage

Damages on actuator rod or broken hose connector on the actuator is acceptable



Acceptable



Acceptable

Turbo charger

Criteria:

Corrosion

Corrosion is acceptable



Acceptable



Acceptable

Turbo charger

Criteria:

Corrosion

Corrosion is acceptable



Acceptable