

Brake caliper

Criteria:

Identification

Completeness

Mechanical damage

Corrosion



Fixed caliper



Floating caliper



Caliper with parking brake



Caliper with electric parking brake

Brake caliper

Criteria:

Identification

Part number on housing or box



Acceptable



Not acceptable



Acceptable

Brake caliper

Criteria:

Completeness

Part must be complete

Brake caliper

Criteria:

Mechanical damage

Casting/housing damaged or partly broken off is not acceptable



Not acceptable



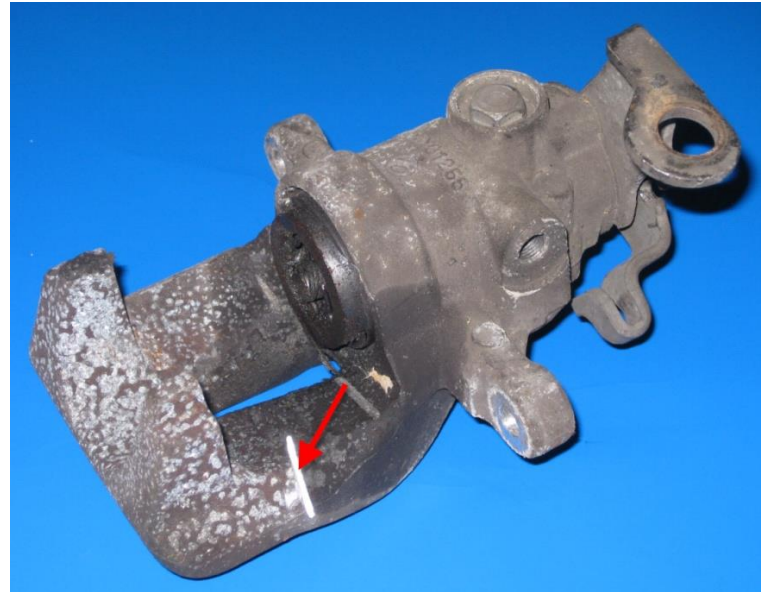
Not acceptable

Brake caliper

Criteria:

Mechanical damage

Cuts, Cracks, etc. is not acceptable



Not acceptable

Brake caliper

Criteria:

Mechanical damage

Broken plug with more than 5 mm material remaining is acceptable (less than 5 mm not acceptable)



Not acceptable



Acceptable

Brake caliper

Criteria:

Mechanical damage

Significant damage to motor housing, cracked or chipped motor is not acceptable



Not acceptable



Acceptable

Brake caliper

Criteria:

Mechanical damage

Broken Mounting Lugs are not acceptable



Not acceptable

Brake caliper

Criteria:

Corrosion

Corrosion is not acceptable