

Clutch Components

Criteria:

Identification

Completeness

Mechanical damage

Corrosion



Clutch pressure plate



Clutch disc

Clutch disc

Criteria:

Identification

Brand must be legible on the part



Acceptable



Acceptable

Clutch Pressure Plate

Criteria:

Identification

Brand must be legible on the part (see exemplary picture).



Acceptable



Acceptable

Clutch Disc

Criteria:

Completeness

Acceptable with

- missing torsional damper springs - if hub is not broken
- missing friction material



Acceptable



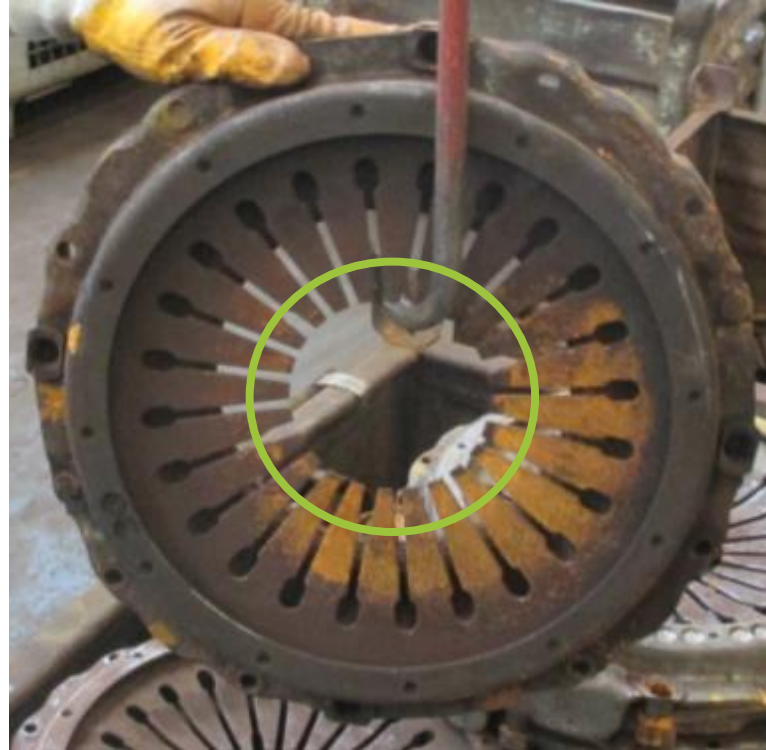
Acceptable

Clutch Pressure Plate

Criteria:

Completeness

Pressure Plate is acceptable if releaser is missing, no need to dismantle it.



Acceptable

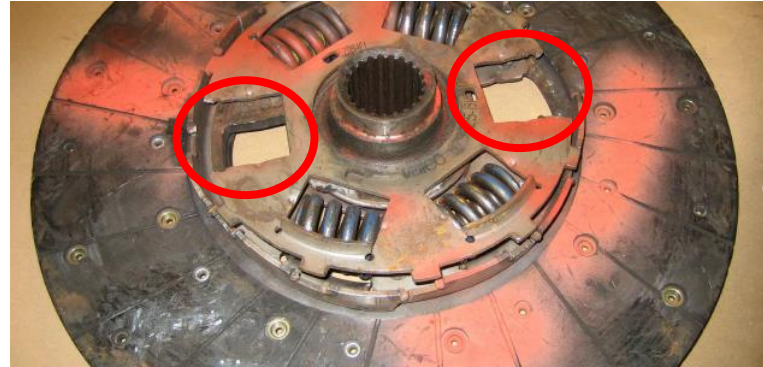
Clutch Disc

Criteria:

Mechanical damage

Not acceptable if

- clutch disc is bent or broken
- hub is broken
- damper is broken



Not acceptable



Not acceptable

Clutch Pressure Plate

Criteria:

Mechanical damage

Not acceptable if

- Cover is broken or distorted
- Diaphragm is broken or worn



Not acceptable



Not acceptable

Clutch Disc

Criteria:

Corrosion

Slight corrosion is acceptable,
heavy corrosion is not
acceptable



Not acceptable

Clutch Pressure Plate

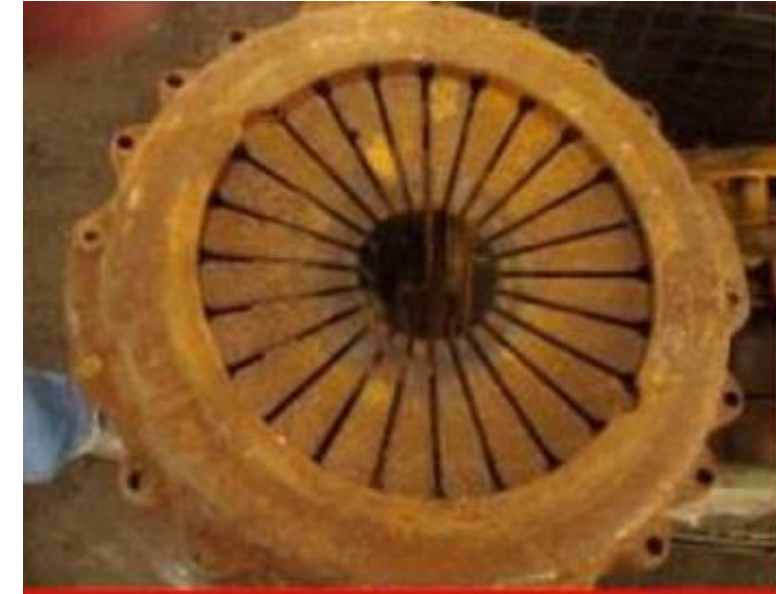
Criteria:

Corrosion

Slight corrosion is acceptable,
heavy corrosion is not
acceptable



Acceptable



Not acceptable

Clutch Disc

Additional information

Not acceptable if it has blue metal through overheating



Not acceptable

Clutch Pressure Plate

Additional information

Not acceptable if it has blue metal through overheating



Not acceptable



Not acceptable