

## Distributor injection pump

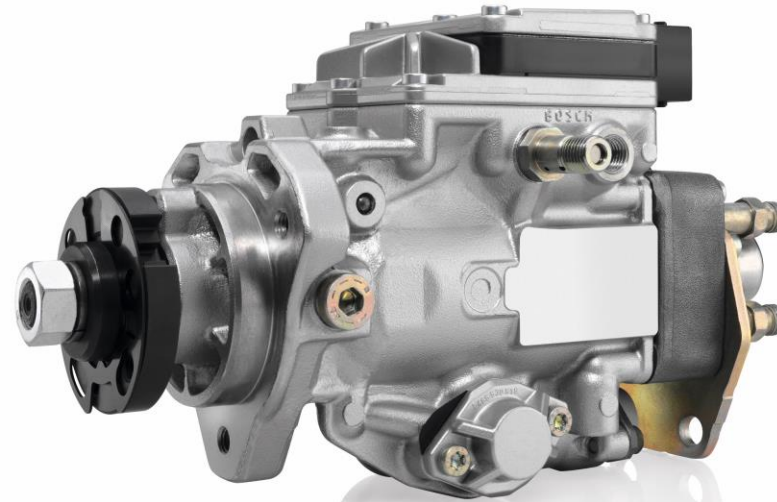
### Criteria:

Identification

Completeness

Mechanical damage

Corrosion



## Distributor injection pump

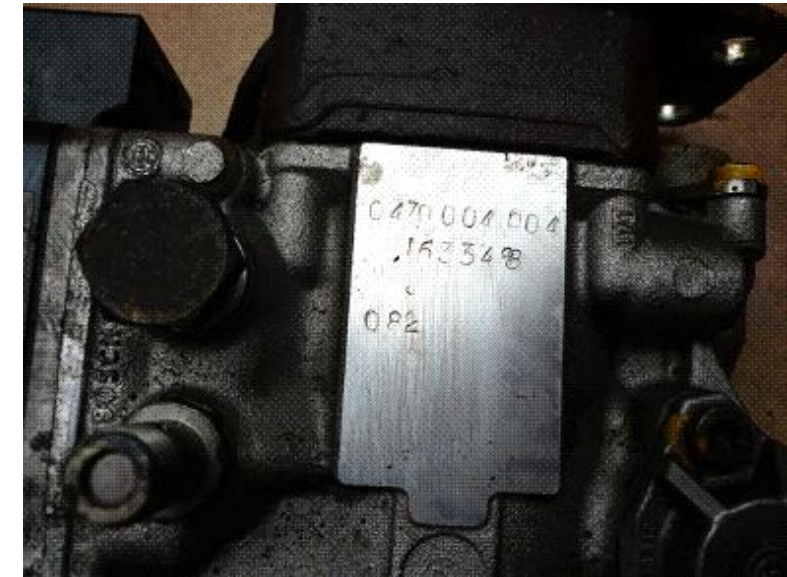
### Criteria:

#### Identification

Part number must be legible



Acceptable



Not acceptable

## Distributor injection pump

### Criteria:

Completeness

Return with and without nut



Acceptable



Acceptable

## Distributor injection pump

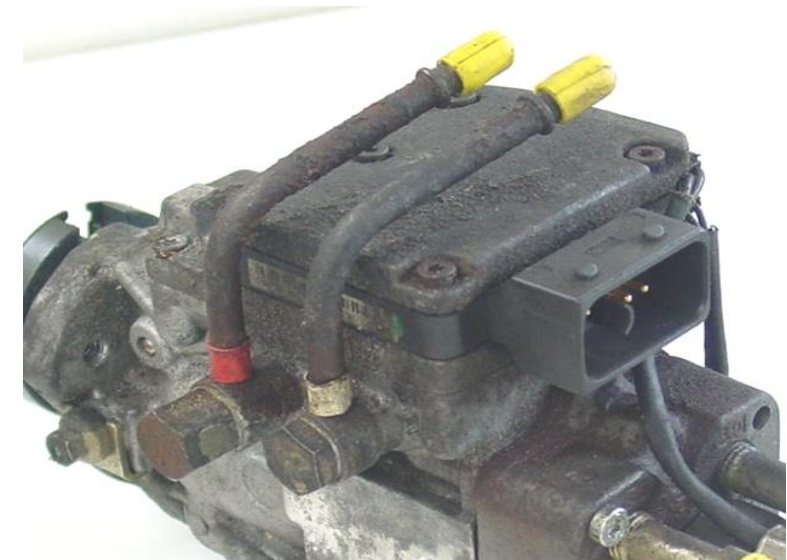
### Criteria:

Completeness

Return with and without relief valve



Acceptable



Acceptable

## Distributor injection pump

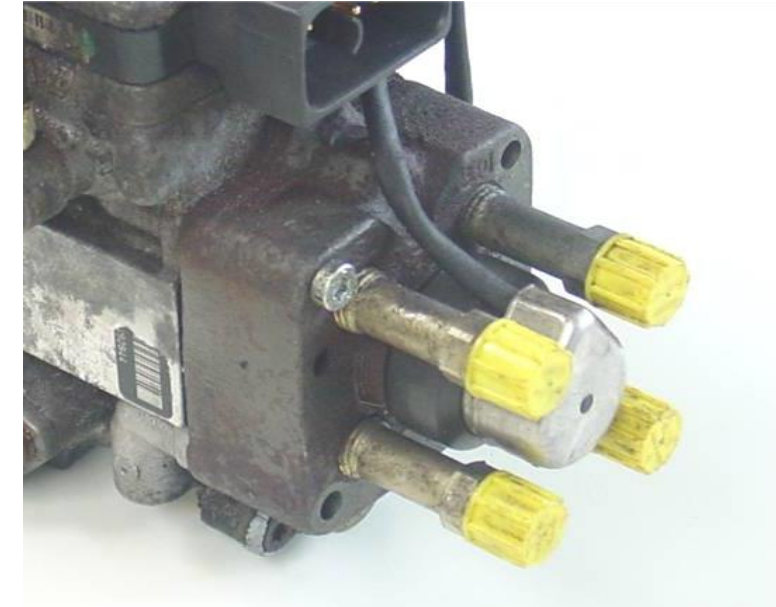
### Criteria:

Completeness

Return without pipe connection



Acceptable



Acceptable



## Distributor injection pump

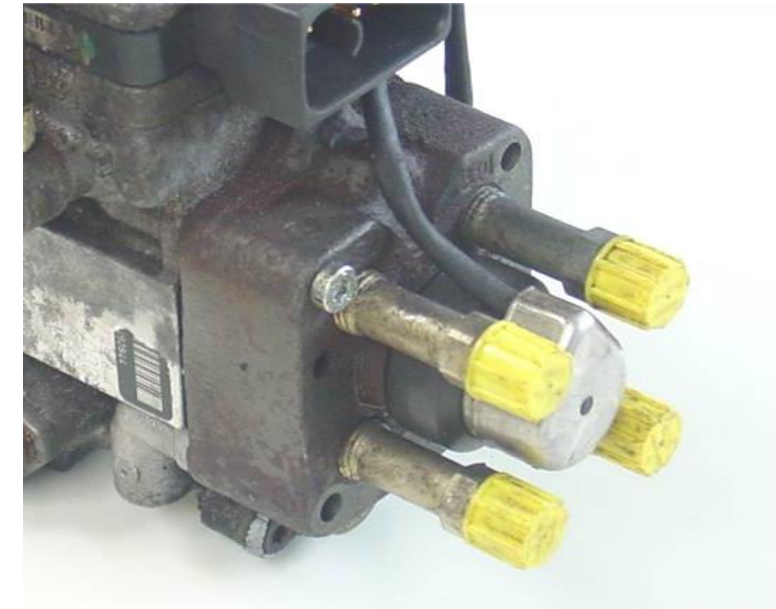
### Criteria:

Completeness

Return without DMV11 is not acceptable



Not acceptable



Acceptable

## Distributor injection pump

### Criteria:

Mechanical damage

Damage on housing or damage on thread is acceptable



Acceptable



Acceptable

# Distributor injection pump

## Criteria:

### Mechanical damage

#### Acceptable is:

- Damage on cables as ragged, cut or provisionally repaired
- cable crimped



Acceptable



Acceptable



## Distributor injection pump

### Criteria:

#### Mechanical damage

Acceptable is:

- cable at DMV 10 damaged
- cable tuned



Acceptable



Acceptable

## Distributor injection pump

### Criteria:

Mechanical damage

Broken plugs are acceptable



Acceptable



Acceptable

## Distributor injection pump

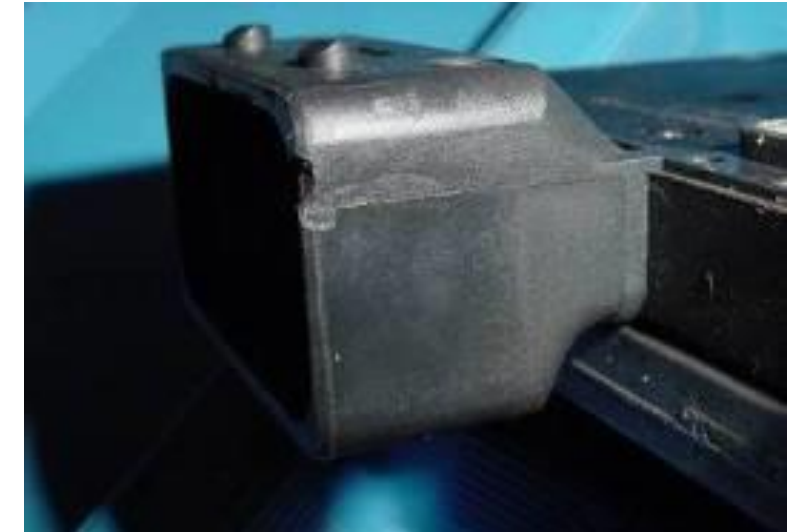
### Criteria:

Mechanical damage

Damaged pins and slightly damaged plugs are acceptable



Acceptable



Acceptable

## Distributor injection pump

### Criteria:

Mechanical damage

Missing plugs or defective plugs are acceptable



Acceptable



Acceptable



## Distributor injection pump

### Criteria:

Corrosion

Corrosion and oxidation is acceptable



Acceptable



Acceptable