

Electric steering pump

Criteria:

Identification

Completeness

Mechanical damage

Corrosion



Electric steering pump

Criteria:

Identification

Order of identification:

- Factory number on the part or
- Bosch exchange number (e.g. starting with 76..955...) on the part or
- Bosch exchange number (e.g. starting with 76... or KS...) on the box



Acceptable

Electric steering pump

Criteria:

Completeness

Incomplete parts are not acceptable

Electric steering pump

Criteria:

Mechanical damage

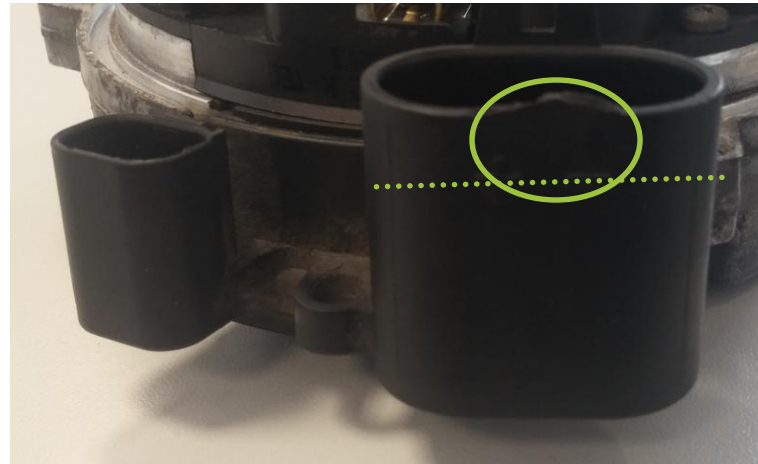
1. Broken plug
2. Common mechanical damage
3. Fire damage

Electric steering pump

Criteria:

Mechanical damage

1. Broken plug:
Broken nose on connector is acceptable;
power supply connector broken below nose is not acceptable



Acceptable



Not acceptable

Electric steering pump

Criteria:

Mechanical damage

- 2. Common mechanical damage and
- 3. Fire damage:
Damages on housing are not acceptable;
Broken ODB-pins or fire damages are not acceptable



Not acceptable



Not acceptable

Electric steering pump

Criteria:

Corrosion

Heavy corrosion is not acceptable