

## Steering pump

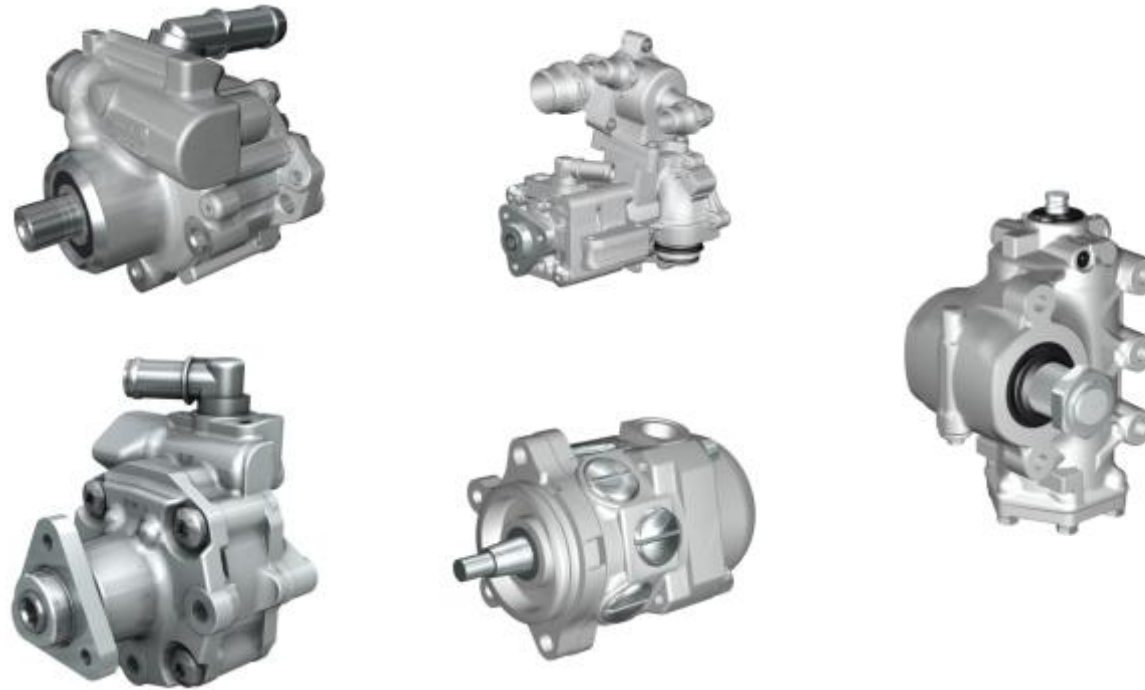
### Criteria:

Identification

Completeness

Mechanical damage

Corrosion



# Steering pump

## Criteria:

### Identification

Order of identification:

- factory number on the part or
- Bosch exchange number (e.g. starting with 76..955...) on the part or
- Bosch exchange number (e.g. starting with 76... oder KS...) on the box



Acceptable

## Steering pump

### Criteria:

Completeness

Missing shaft or balls is not acceptable



Not acceptable



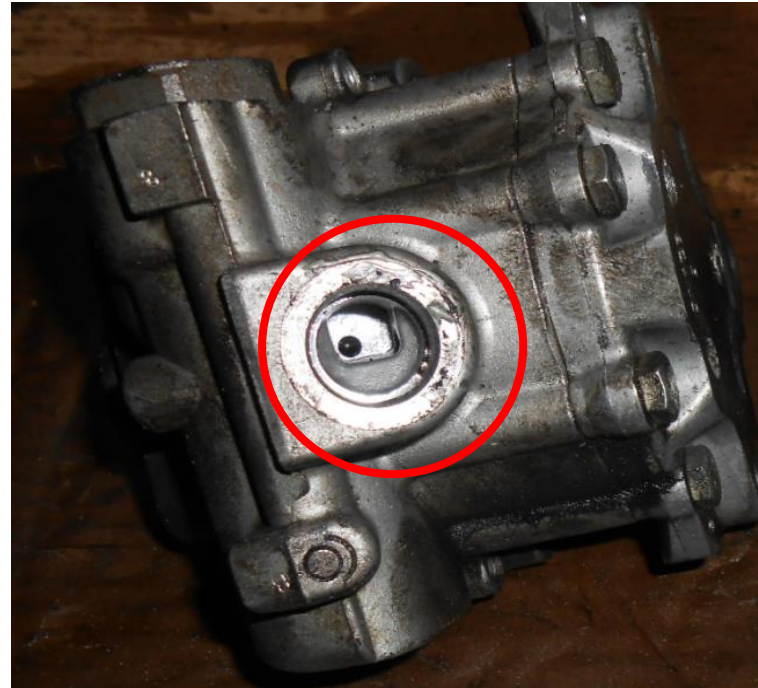
Acceptable

## Steering pump

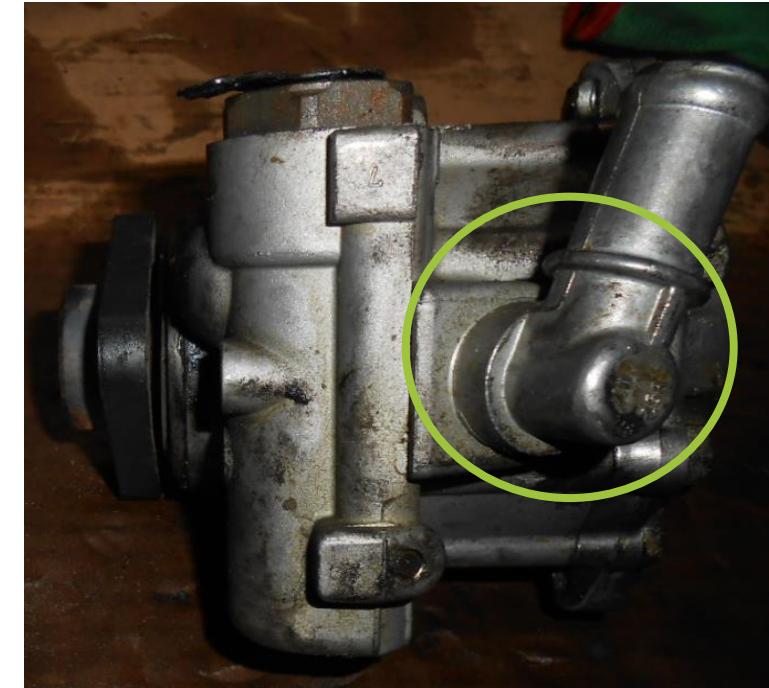
### Criteria:

Completeness

Missing components is not acceptable



Not acceptable



Acceptable

## Steering pump

### Criteria:

Mechanical damage

Damaged pulley is acceptable



Acceptable



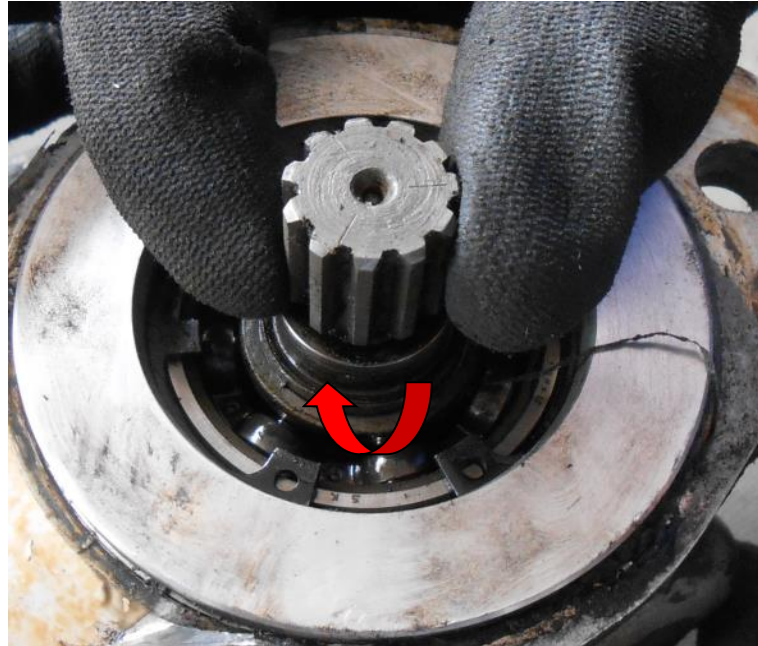
Acceptable

## Steering pump

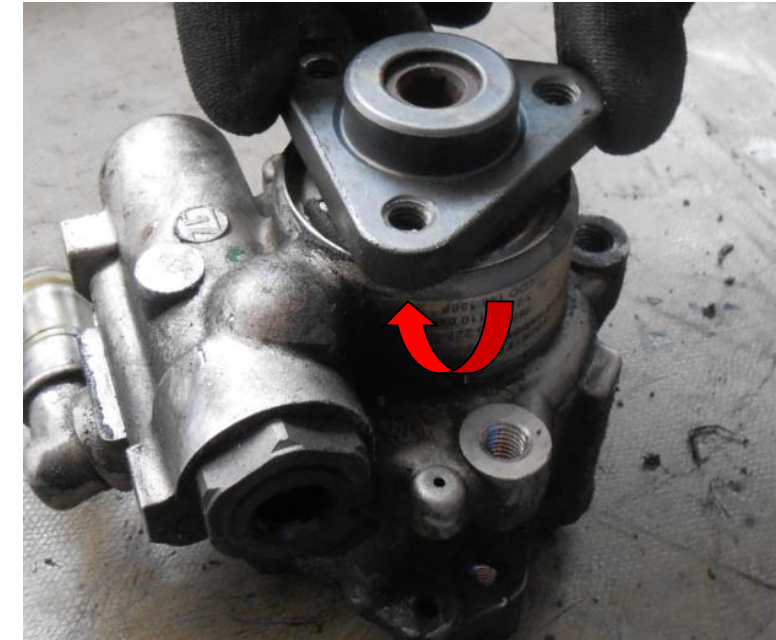
### Criteria:

Mechanical damage

Shaft rough-/non-running is not acceptable



Not acceptable



Not acceptable

## Steering pump

### Criteria:

Mechanical damage

Damaged or broken housing is not acceptable



Not acceptable



Not acceptable

## Steering pump

### Criteria:

Mechanical damage

Damaged gearing is not acceptable



Acceptable



Not acceptable



## Steering pump

### Criteria:

Corrosion

Slight and average corrosion is acceptable



Acceptable



Acceptable

## Steering pump

### Criteria:

Corrosion

Heavy corrosion is not acceptable



Not acceptable