

## Torque converter

### Criteria:

Identification

Completeness

Mechanical damage

Corrosion



## Torque converter

### Criteria:

#### Identification

Part number must be legible

## Torque converter

### Criteria:

#### Completeness

Torque converter opened or dismantled;  
Loose parts within torque converter (recognizable due to specific noise when lifting/shaking)



Not acceptable



Not acceptable

## Torque converter

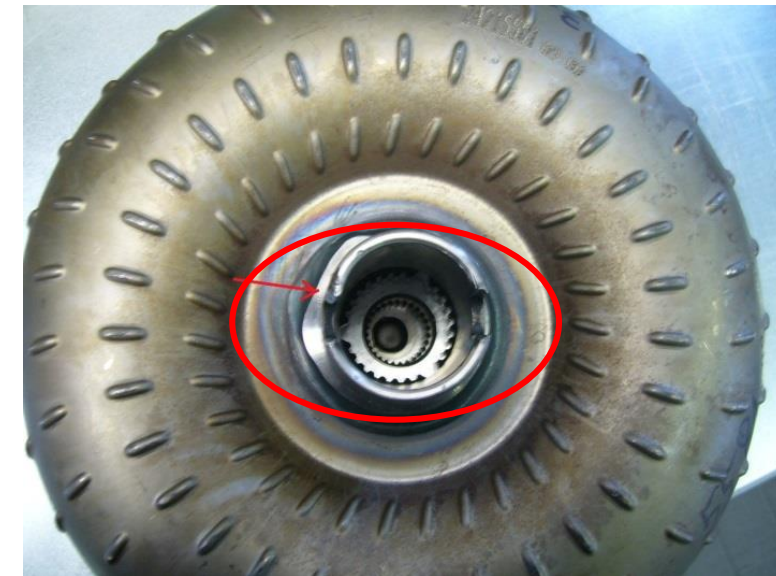
### Criteria:

Mechanical damage

Hub broken/damaged or hub deformed



Not acceptable



Not acceptable

## Torque converter

### Criteria:

Mechanical damage

Pump connector seized up on hub or damaged housing



Not acceptable



Not acceptable

## Torque converter

### Criteria:

#### Mechanical damage

Mounting rim damaged is not acceptable;

External repair:  
Painting due to external repair/  
remanufacturing by 3<sup>rd</sup> party  
remanufacturer is not  
acceptable



Not acceptable



Not acceptable

## Torque converter

### Criteria:

#### Corrosion

Slight corrosion on surface is acceptable;  
Severe corrosion, fretting corrosion (especially on hub) is not acceptable



Acceptable



Not acceptable